

MINI / MICRO ROK 2025

IDENTIFICATION SHEET

This Identification Sheet reproduces descriptions, illustrations and dimensions of the MINI AND MICRO ROK.



ATTENTION

ALL THE ENGINE PARTS MUST BE ORIGINAL BY VORTEX ROK.

Neither engines nor accessories can be modified. By this we mean any shape, content or function changes which may differ from what originally produced (manufactured and assembled). Furthermore this includes any addition and /or removal of material.
All dimensions in the technical drawings are in mm.



MINI / MICRO ROK 2025

TECHNICAL INFORMATION AND CHARACTERISTICS

ORIGINAL BORE	41,96 mm
MAX ALLOWED BORE	42.10 mm
STROKE	43 +/- 0,1 mm
ORIGINAL DISPLACEMENT	60 cc
CONROD C-TO-C DISTANCE	90 +/- 0,1 mm
WEIGHT OF CONROD	94g +/- 2g
SPROCKET	Z10-Z11-Z12

CYLINDER DEVELOPEMENT AND DISTRIBUTION

EXHAUST PORT	154° +/- 2° (US)
MAIN TRANSFER	116° ±1.5°
ADMISSION	143° ±1.5°

Check of the distribution as described in the **ROK CUP USA 2025 Technical Regulation.**






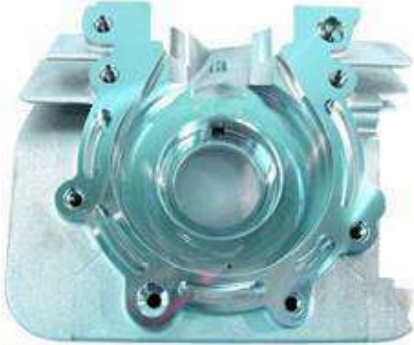
Measurement must be done with engine head dismantled (studs tightening torque: 1.8 kgm).

ATTENTION

ALL THE ENGINE PARTS MUST BE ORIGINAL BY VORTEX ROK.

Neither engines nor accessories can be modified. By this we mean any shape, content or function changes which may differ from what originally produced (manufactured and assembled). Furthermore this includes any addition and /or removal of material.
All dimensions in the technical drawings are in mm.

MINI / MICRO ROK 2025

<p>PICTURE ENGINE UPPER SIDE</p>	<p>PICTURE ENGINE LOWER SIDE</p>
	
<p>CYLINDER BASE</p>	<p>CYLINDERHEAD AND COMBUSTION CHAMBER</p>
	
<p>PICTURE OF THE CRANKCASE</p>	<p>INTERIOR PICTURE OF THE CRANKCASE</p>
	

ATTENTION

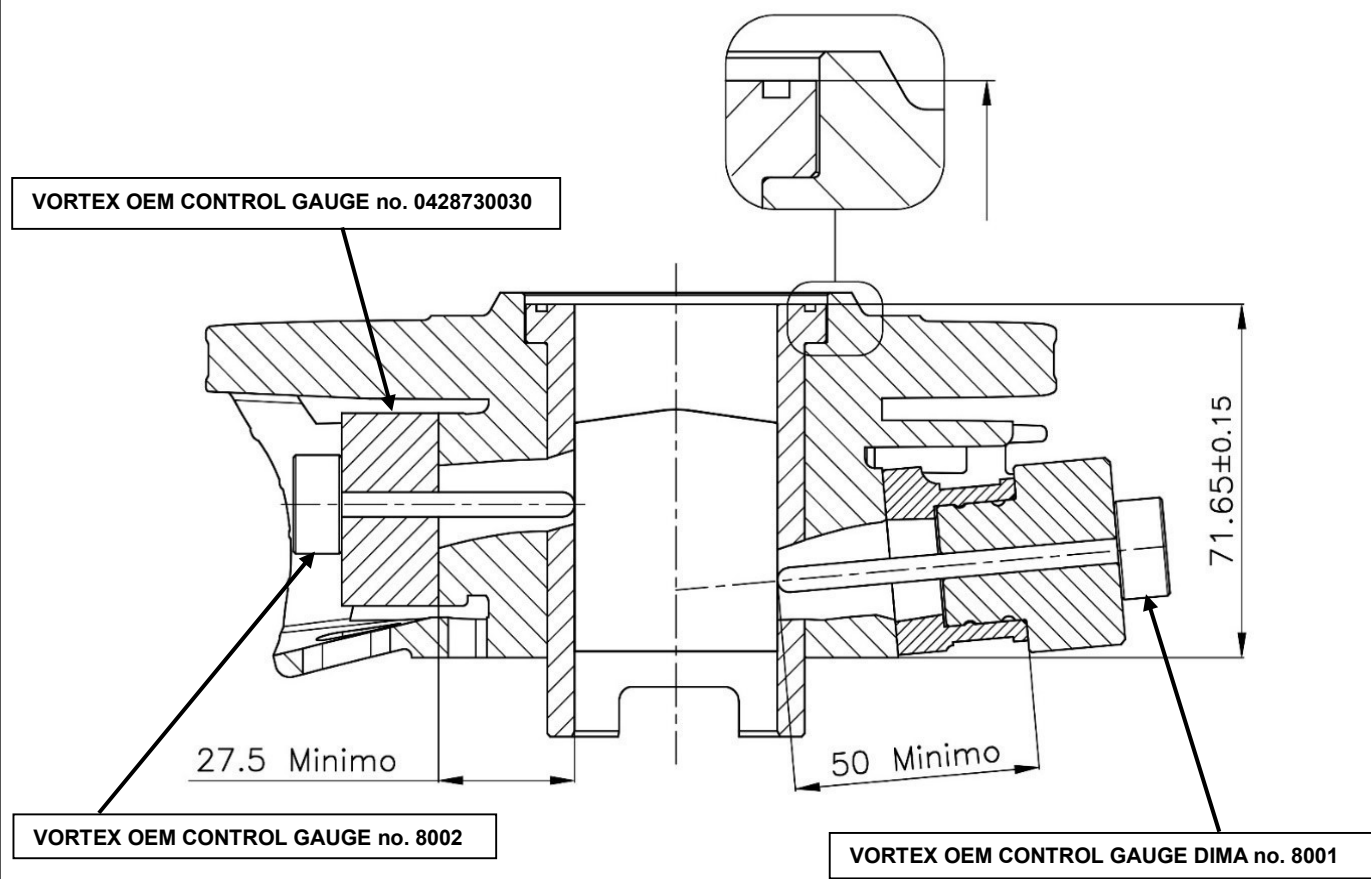
ALL THE ENGINE PARTS MUST BE ORIGINAL BY VORTEX ROK.

Neither engines nor accessories can be modified. By this we mean any shape, content or function changes which may differ from what originally produced (manufactured and assembled). Furthermore this includes any addition and /or removal of material.
All dimensions in the technical drawings are in mm.

MINI / MICRO ROK 2025

CYLINDER SECTION

MINIMUM DISTANCE OF THE CARBURETTOR SUPPORTING PLATE FROM THE CYLINDER AXLE



EXHAUST GASKET



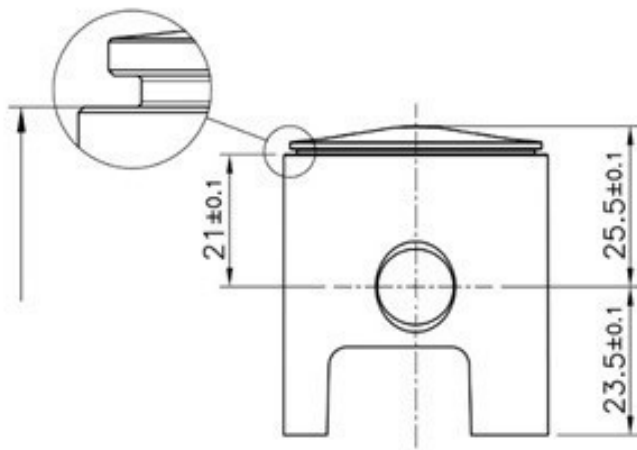
ATTENTION

ALL THE ENGINE PARTS MUST BE ORIGINAL BY VORTEX ROK.

Neither engines nor accessories can be modified. By this we mean any shape, content or function changes which may differ from what originally produced (manufactured and assembled). Furthermore this includes any addition and /or removal of material.
All dimensions in the technical drawings are in mm.

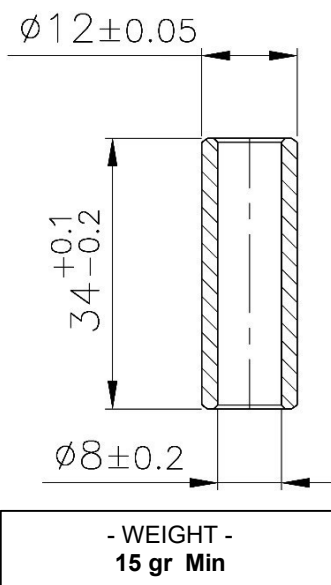
MINI / MICRO ROK 2025

PISTON

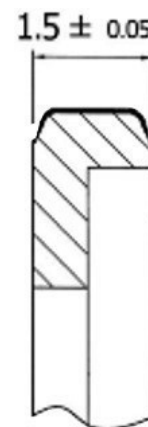


- WEIGHT -
59 gr +/- 5 gr

PISTON PIN



PISTON RING DETAIL PIECE



ATTENTION

ALL THE ENGINE PARTS MUST BE ORIGINAL BY VORTEX ROK.

Neither engines nor accessories can be modified. By this we mean any shape, content or function changes which may differ from what originally produced (manufactured and assembled). Furthermore this includes any addition and /or removal of material.
All dimensions in the technical drawings are in mm.

MINI / MICRO ROK 2025

PICTURE AND MARKING OF THE PISTON

Mandatory to have the brand VORTEX cast piston as shown in the picture.

Mandatory to have the number of the mold cast as shown in the picture.

OPTION 1



OPTION 1



OPTION 2



OPTION 2



ATTENTION

ALL THE ENGINE PARTS MUST BE ORIGINAL BY VORTEX ROK.

Neither engines nor accessories can be modified. By this we mean any shape, content or function changes which may differ from what originally produced (manufactured and assembled). Furthermore this includes any addition and /or removal of material.
All dimensions in the technical drawings are in mm.

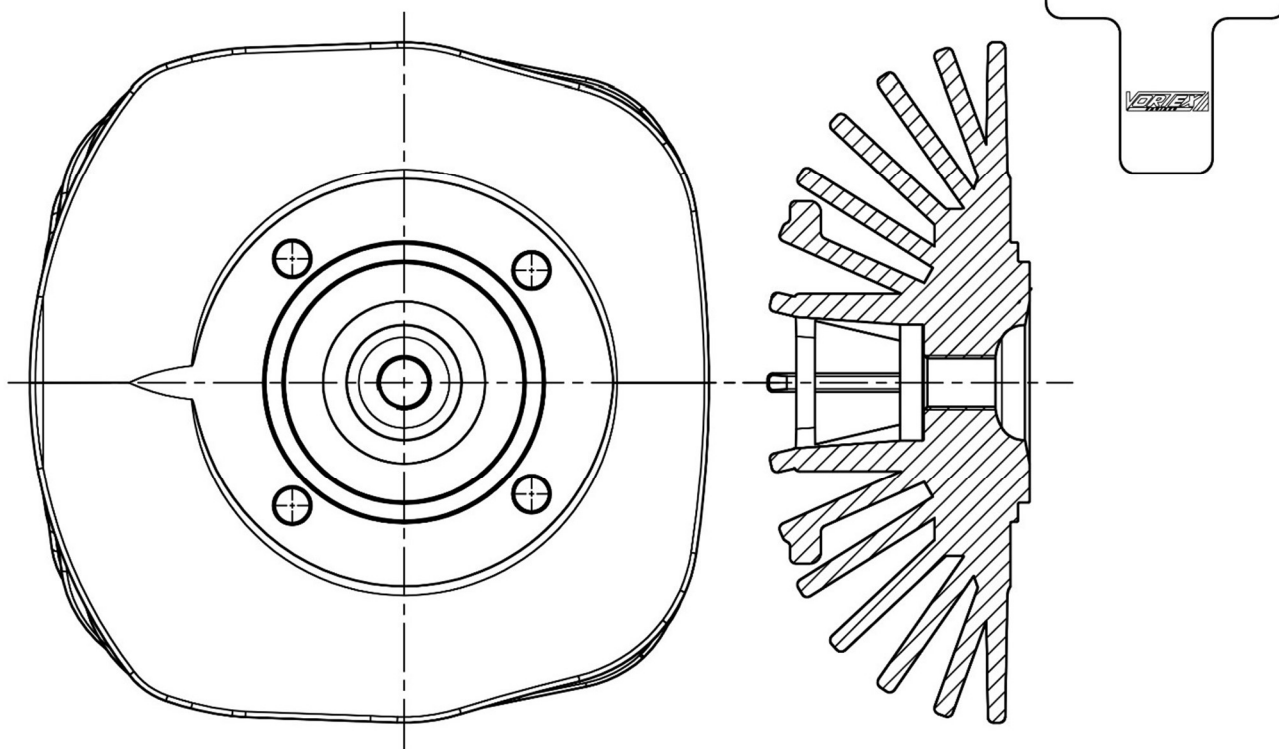
MINI / MICRO ROK 2025

DRAWING OF CYLINDERHEAD AND COMBUSTION CHAMBER

Volume of combustion chamber, as described in the **ROK CUP USA Technical Regulation 2025**.

SQUISH THICKNESS – SQUISH - EPESSEUR DE SQUISH: 0,8 mm MIN

Template gauge for checking the combustion chamber profile



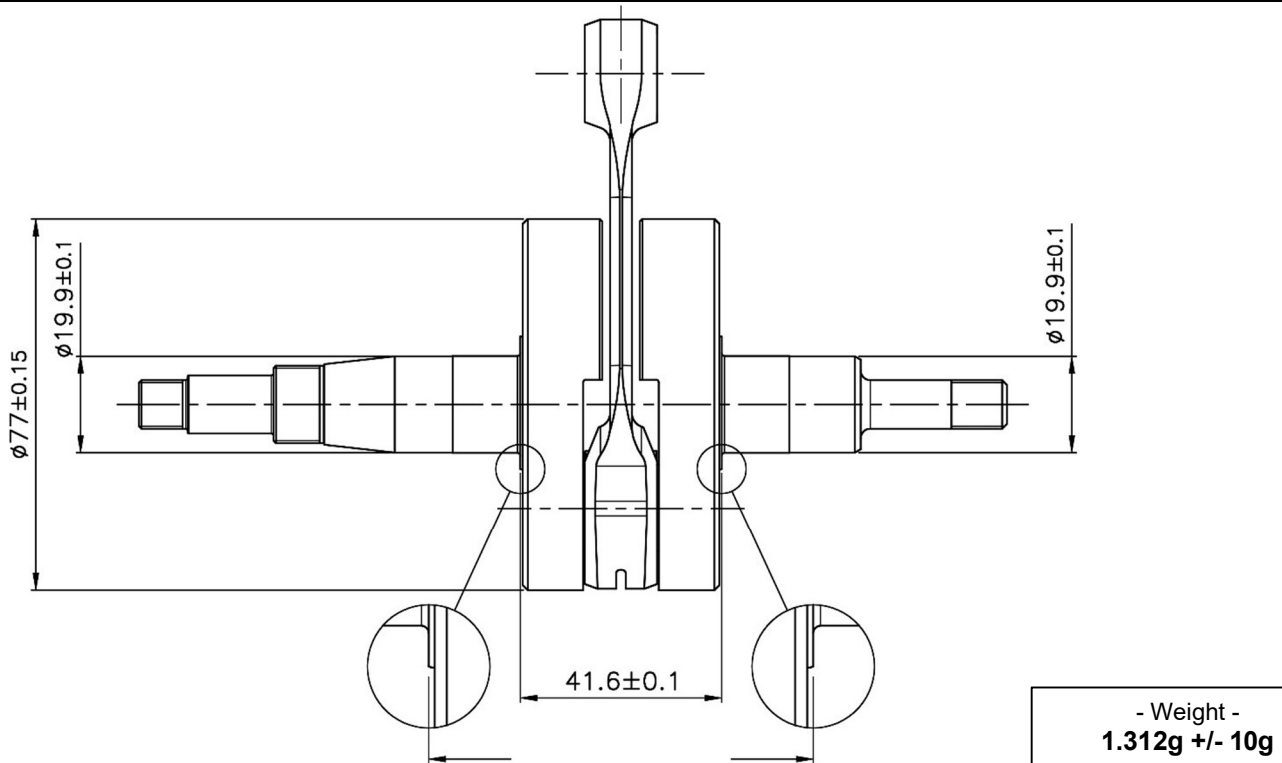
ATTENTION

ALL THE ENGINE PARTS MUST BE ORIGINAL BY VORTEX ROK.

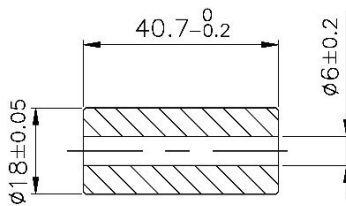
Neither engines nor accessories can be modified. By this we mean any shape, content or function changes which may differ from what originally produced (manufactured and assembled). Furthermore this includes any addition and /or removal of material.
All dimensions in the technical drawings are in mm.

MINI / MICRO ROK 2025

CRANKSHAFT AND CRANKPIN



CRANK PIN



- Weight -
71g +/- 1g

OPTION 1



OPTION 2



ATTENTION

ALL THE ENGINE PARTS MUST BE ORIGINAL BY VORTEX ROK.

Neither engines nor accessories can be modified. By this we mean any shape, content or function changes which may differ from what originally produced (manufactured and assembled). Furthermore this includes any addition and /or removal of material.
All dimensions in the technical drawings are in mm.

MINI / MICRO ROK 2025

PICTURES AMD MARKING OF CONROD



PICTURE OF CRANKSHAFT WITH THE BALANCER



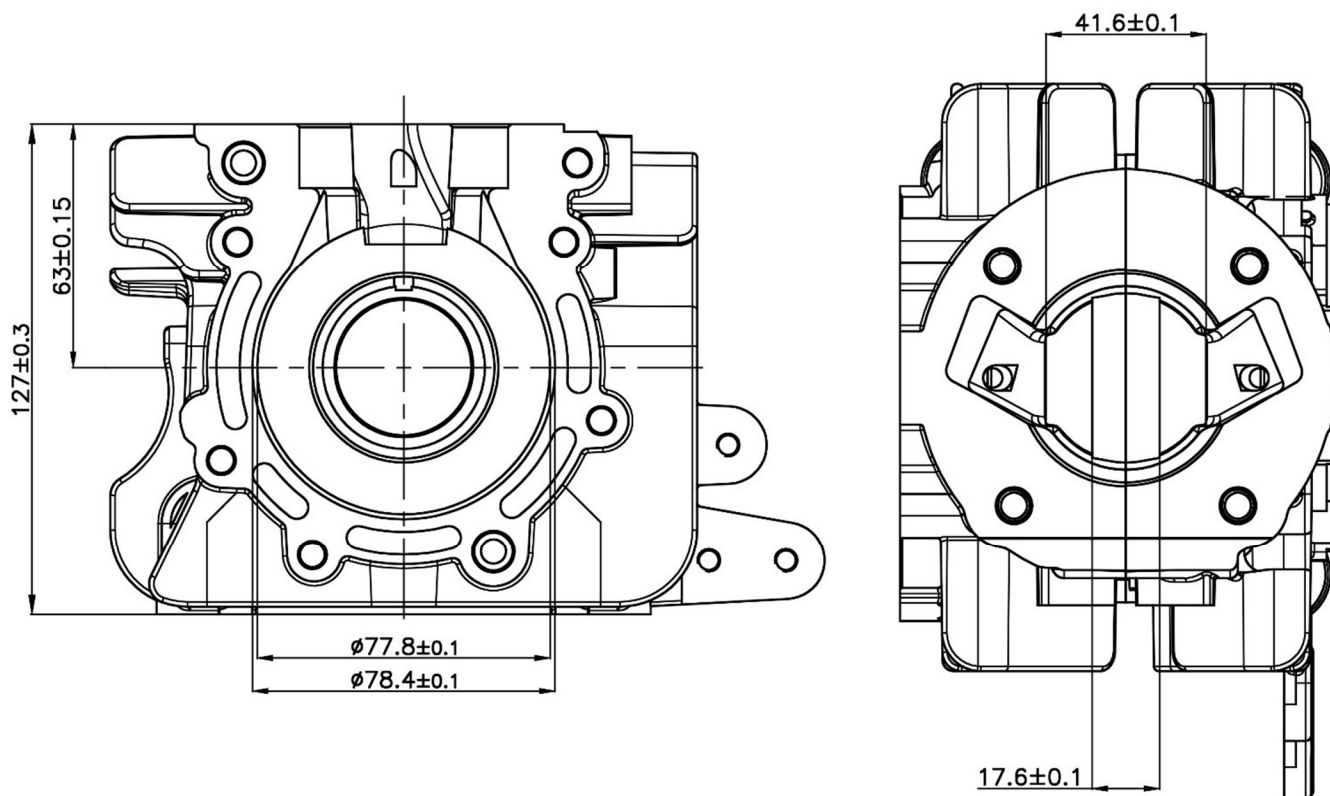
ATTENTION

ALL THE ENGINE PARTS MUST BE ORIGINAL BY VORTEX ROK.

Neither engines nor accessories can be modified. By this we mean any shape, content or function changes which may differ from what originally produced (manufactured and assembled). Furthermore this includes any addition and /or removal of material.
All dimensions in the technical drawings are in mm.

MINI / MICRO ROK 2025

INTERIOR VIEW OF THE CRANKCASE AND ASEMBLY WIEV



CRANKSHAFT BEARINGS

TYPE	DIMENSIONS	CHARACTERISTICS
Free brand 6204.C4	20x47x14mm	Steel Balls 8

ATTENTION

ALL THE ENGINE PARTS MUST BE ORIGINAL BY VORTEX ROK.

Neither engines nor accessories can be modified. By this we mean any shape, content or function changes which may differ from what originally produced (manufactured and assembled). Furthermore this includes any addition and /or removal of material.

All dimensions in the technical drawings are in mm.

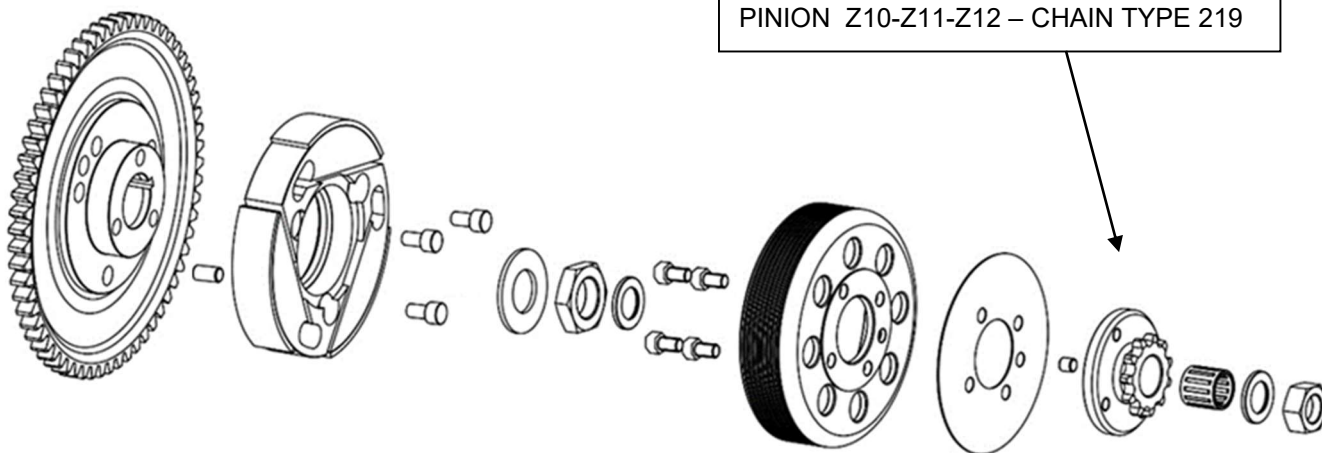
MINI / MICRO ROK 2025

DETAIL PHOTO OF THE CRANKSHAFT OIL SEAL POSITION



COMPL. CLUTCH ROTOR WITH STARTING GEAR

PINION Z10-Z11-Z12 – CHAIN TYPE 219



PARTS QUANTITY: 20

WEIGHT OF THE COMPLETE CLUTCH WITH STARTING GEAR AND PROTECTION: 855 gr +/- 30gr

ENGAGEMENT SPEED (MAXIMUM) CAN BE VERIFIED IN EVERY MOMENT OF THE EVENT: 3500RPM

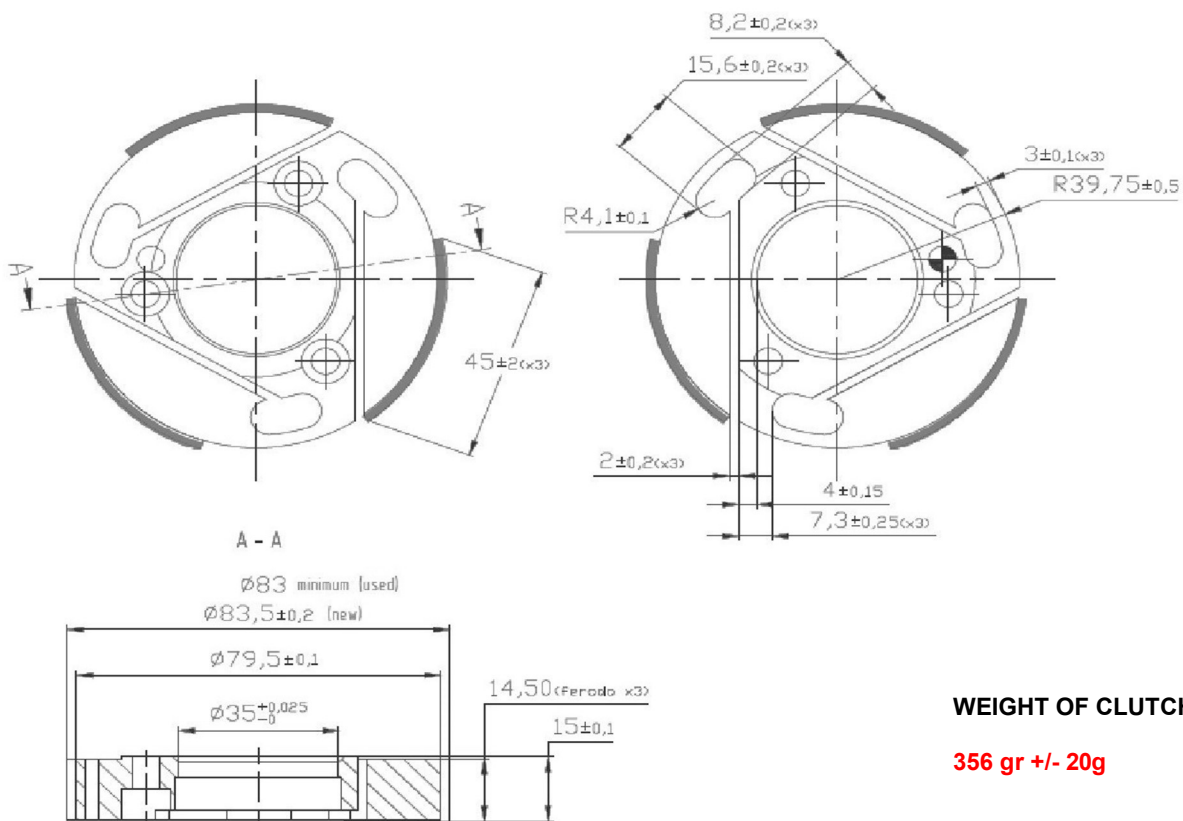
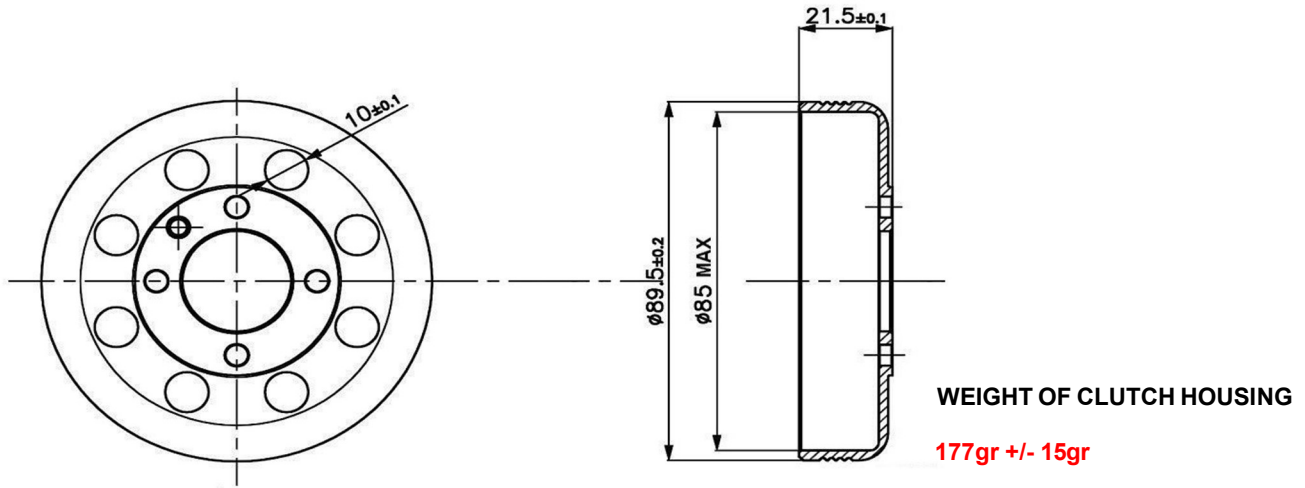
ATTENTION

ALL THE ENGINE PARTS MUST BE ORIGINAL BY VORTEX ROK.

Neither engines nor accessories can be modified. By this we mean any shape, content or function changes which may differ from what originally produced (manufactured and assembled). Furthermore this includes any addition and /or removal of material.
All dimensions in the technical drawings are in mm.

MINI / MICRO ROK 2025

HOUSING AND ROTOR CLUTCH



ATTENTION

ALL THE ENGINE PARTS MUST BE ORIGINAL BY VORTEX ROK.

Neither engines nor accessories can be modified. By this we mean any shape, content or function changes which may differ from what originally produced (manufactured and assembled). Furthermore this includes any addition and /or removal of material. All dimensions in the technical drawings are in mm.

MINI / MICRO ROK 2025

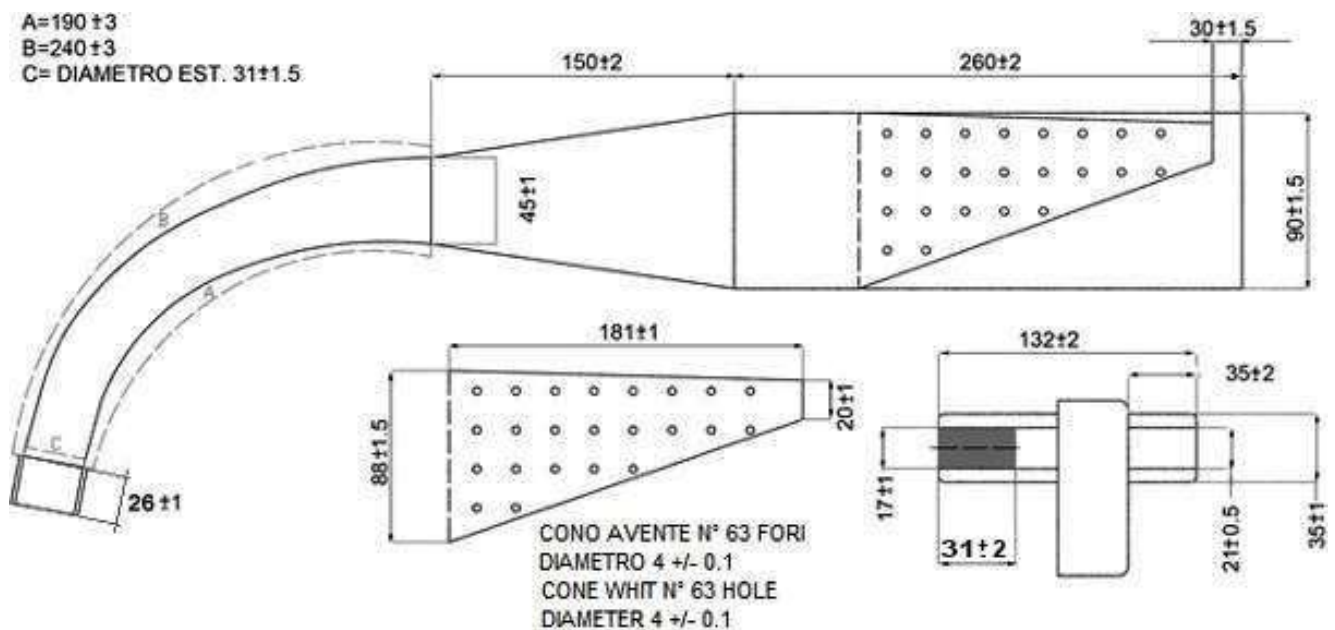
EXHAUST MUFFLER

DIMENSION OF COLLECTOR INCLUDING WELDING.

EXHAUST WEIGHT

1,372gr +/- 5%

A=190±3
B=240±3
C= DIAMETRO EST. 31±1.5



ATTENTION

ALL THE ENGINE PARTS MUST BE ORIGINAL BY VORTEX ROK.

Neither engines nor accessories can be modified. By this we mean any shape, content or function changes which may differ from what originally produced (manufactured and assembled). Furthermore this includes any addition and /or removal of material.
All dimensions in the technical drawings are in mm.

MINI / MICRO ROK 2025

PHOTO AND MARKING OF THE EXHAUST



DURING EXAMINATION, ON THE EXHAUST IT MUST BE INDICATED THE IDENTIFICATION LOGO ROK MINI.

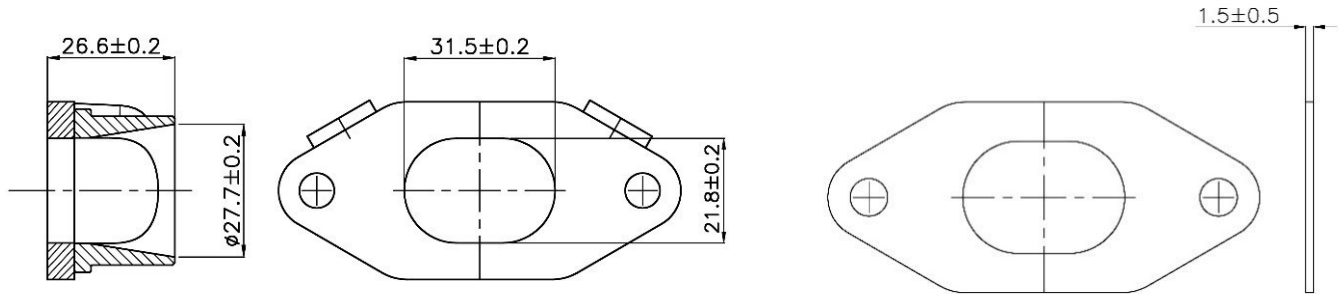
ATTENTION

ALL THE ENGINE PARTS MUST BE ORIGINAL BY VORTEX ROK.

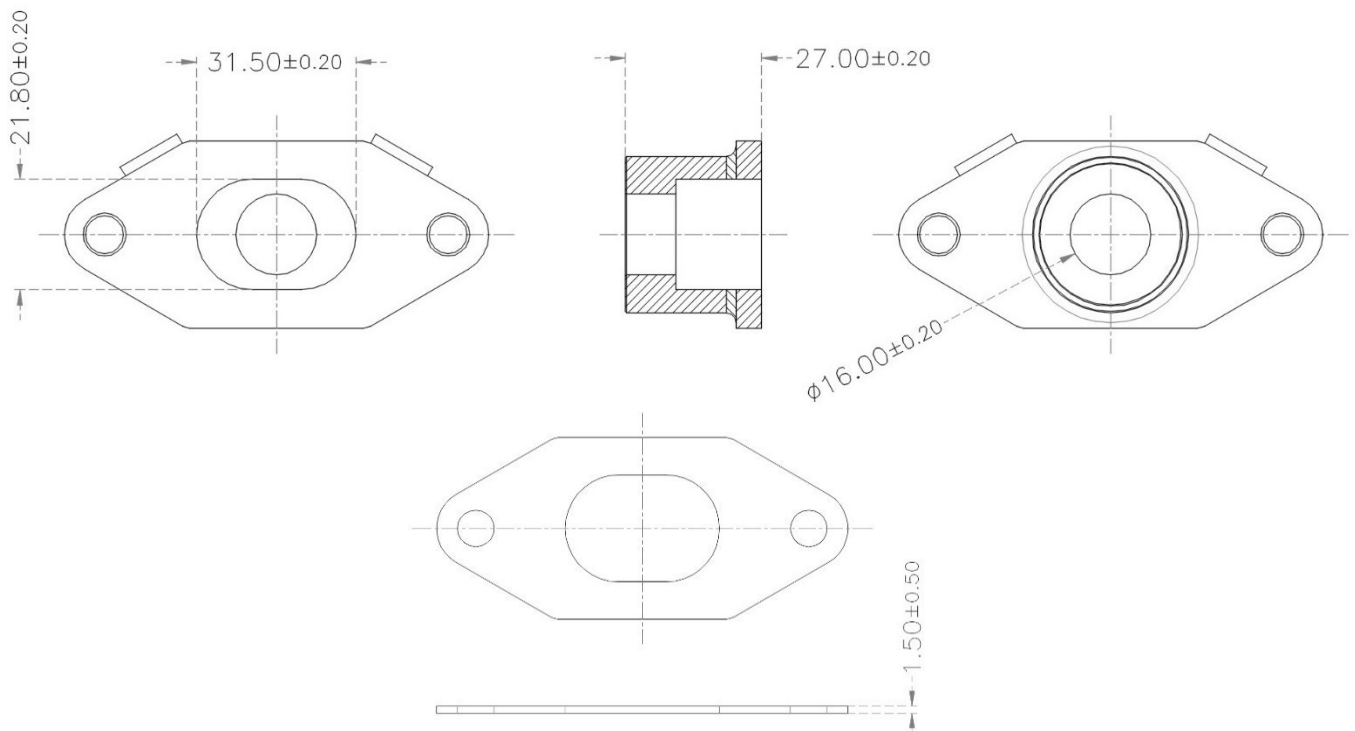
Neither engines nor accessories can be modified. By this we mean any shape, content or function changes which may differ from what originally produced (manufactured and assembled). Furthermore this includes any addition and /or removal of material.
All dimensions in the technical drawings are in mm.

MINI / MICRO ROK 2025

EXHAUST MANIFOLD



EXHAUST MANIFOLD AND GASKET FOR MICRO CATEGORY



ATTENTION

ALL THE ENGINE PARTS MUST BE ORIGINAL BY VORTEX ROK.

Neither engines nor accessories can be modified. By this we mean any shape, content or function changes which may differ from what originally produced (manufactured and assembled). Furthermore this includes any addition and /or removal of material.
All dimensions in the technical drawings are in mm.

MINI / MICRO ROK 2025

INLET SILENCER	
MODEL, TYPE	MINI
<p>MARKED VORTEX AIR FILTER MESH AS OPTIONAL</p>	
<p>OPTION 1</p>	<p>OPTION 2</p>

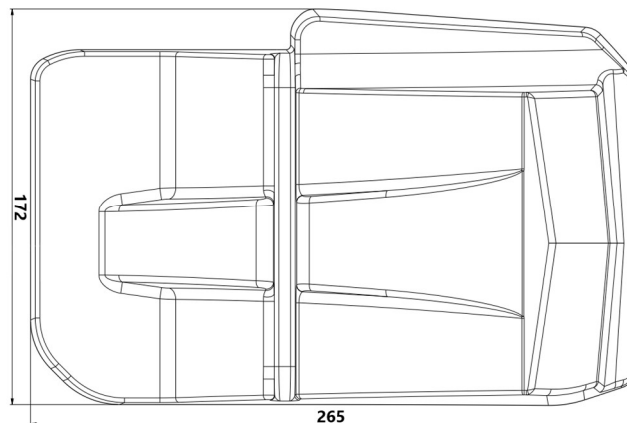
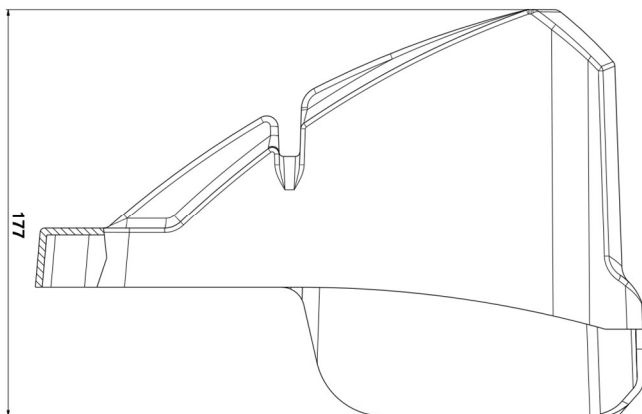
ATTENTION

ALL THE ENGINE PARTS MUST BE ORIGINAL BY VORTEX ROK.

Neither engines nor accessories can be modified. By this we mean any shape, content or function changes which may differ from what originally produced (manufactured and assembled). Furthermore this includes any addition and /or removal of material.
All dimensions in the technical drawings are in mm.

MINI / MICRO ROK 2025

RAIN PROTECTION INLET SILENCER (OPTIONAL)



ATTENTION

ALL THE ENGINE PARTS MUST BE ORIGINAL BY VORTEX ROK.

Neither engines nor accessories can be modified. By this we mean any shape, content or function changes which may differ from what originally produced (manufactured and assembled). Furthermore this includes any addition and /or removal of material.

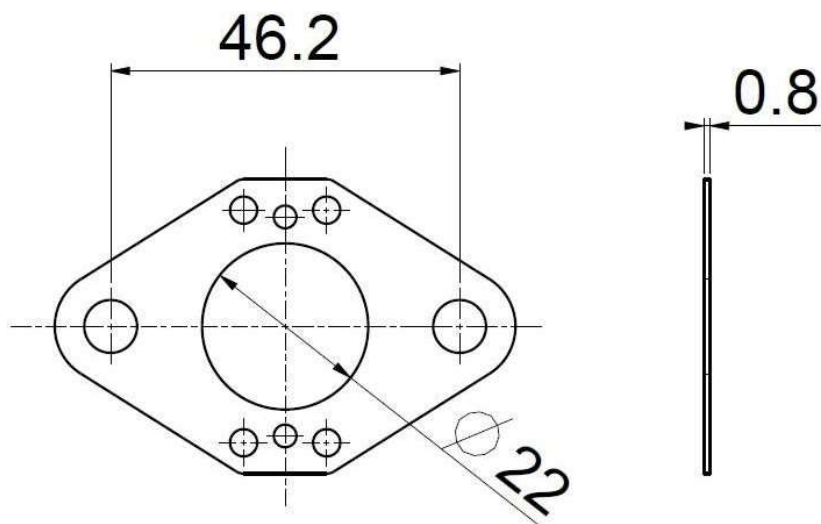
All dimensions in the technical drawings are in mm.

MINI / MICRO ROK 2025

CONNECTOR FIXING FILTER-CARBURETOR IN PLASTIC MATERIAL



TECHNICAL DRAWING GASKET BETWEEN CARBURETTOR AND ENGINE



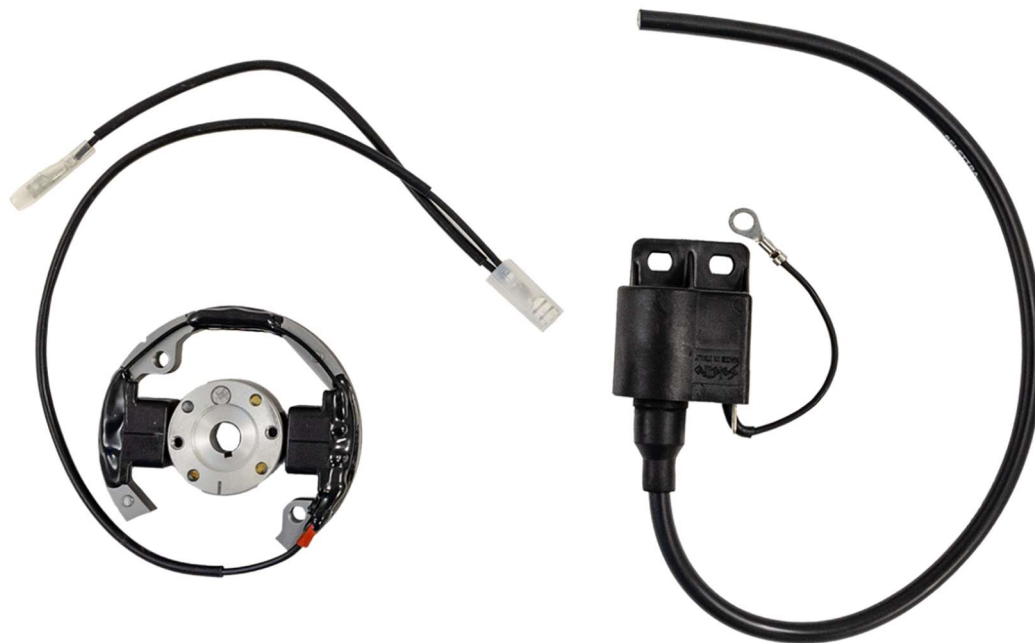
ATTENTION

ALL THE ENGINE PARTS MUST BE ORIGINAL BY VORTEX ROK.

Neither engines nor accessories can be modified. By this we mean any shape, content or function changes which may differ from what originally produced (manufactured and assembled). Furthermore this includes any addition and /or removal of material.
All dimensions in the technical drawings are in mm.

MINI / MICRO ROK 2025

PICTURES OF SELETTA IGNITION



SPARK PLAG



**ONLY AUTHORIZED SPARK PLUG
NGK B10 EG**

ATTENTION

ALL THE ENGINE PARTS MUST BE ORIGINAL BY VORTEX ROK.

Neither engines nor accessories can be modified. By this we mean any shape, content or function changes which may differ from what originally produced (manufactured and assembled). Furthermore this includes any addition and /or removal of material.
All dimensions in the technical drawings are in mm.

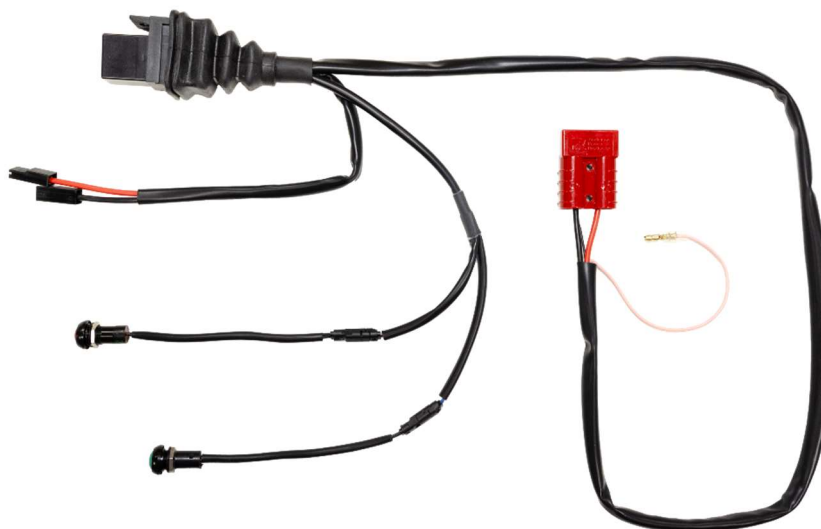
MINI / MICRO ROK 2025

STARTER WIRING

OPTION 1



OPTION 2



Engines shall be mandatory switched on and off by means of onboard starting system. Technical steward members shall check the on-off onboard system anytime.

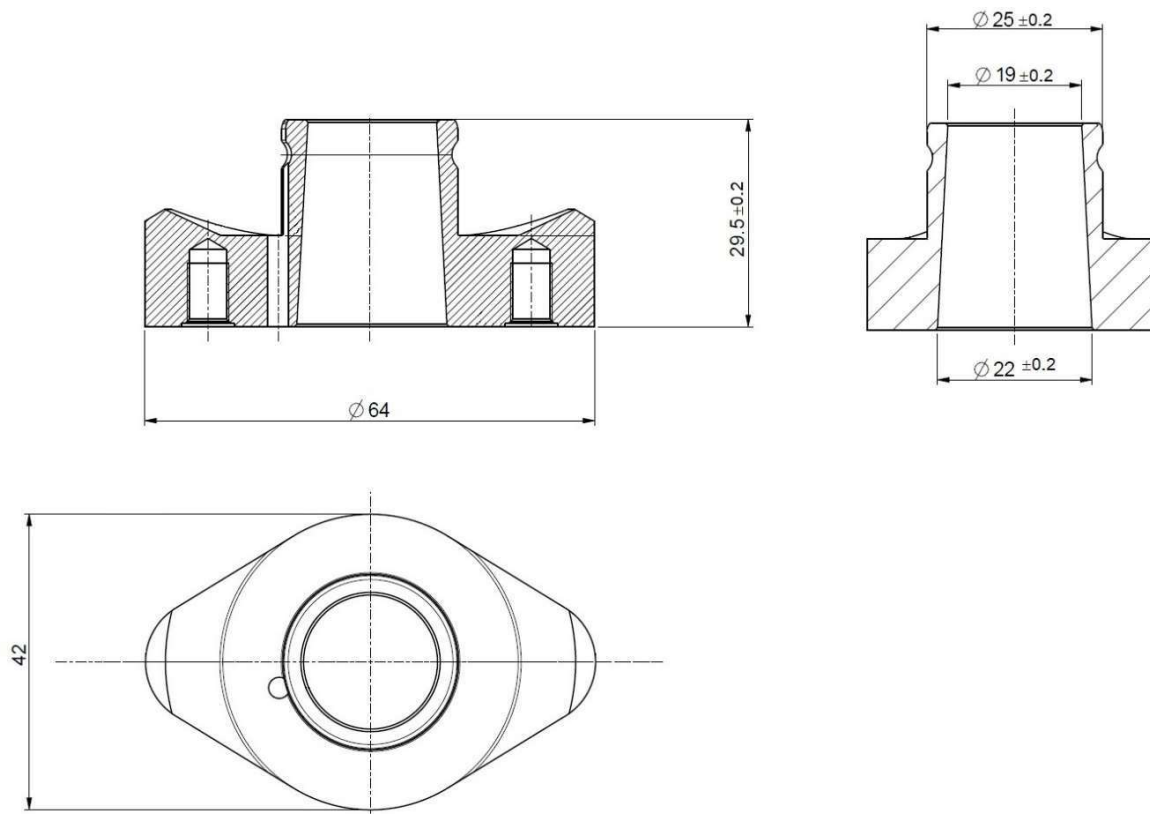
ATTENTION

ALL THE ENGINE PARTS MUST BE ORIGINAL BY VORTEX ROK.

Neither engines nor accessories can be modified. By this we mean any shape, content or function changes which may differ from what originally produced (manufactured and assembled). Furthermore this includes any addition and /or removal of material.
All dimensions in the technical drawings are in mm.

MINI / MICRO ROK 2025

INTAKE MANIFOLD TECHNICAL DRAWING



ATTENTION

ALL THE ENGINE PARTS MUST BE ORIGINAL BY VORTEX ROK.

Neither engines nor accessories can be modified. By this we mean any shape, content or function changes which may differ from what originally produced (manufactured and assembled). Furthermore this includes any addition and /or removal of material.
All dimensions in the technical drawings are in mm.

MINI / MICRO ROK 2025

INTAKE MANIFOLD PHOTO



PHOTO OF INTAKE MANIFOLD RUBBER MOUNT



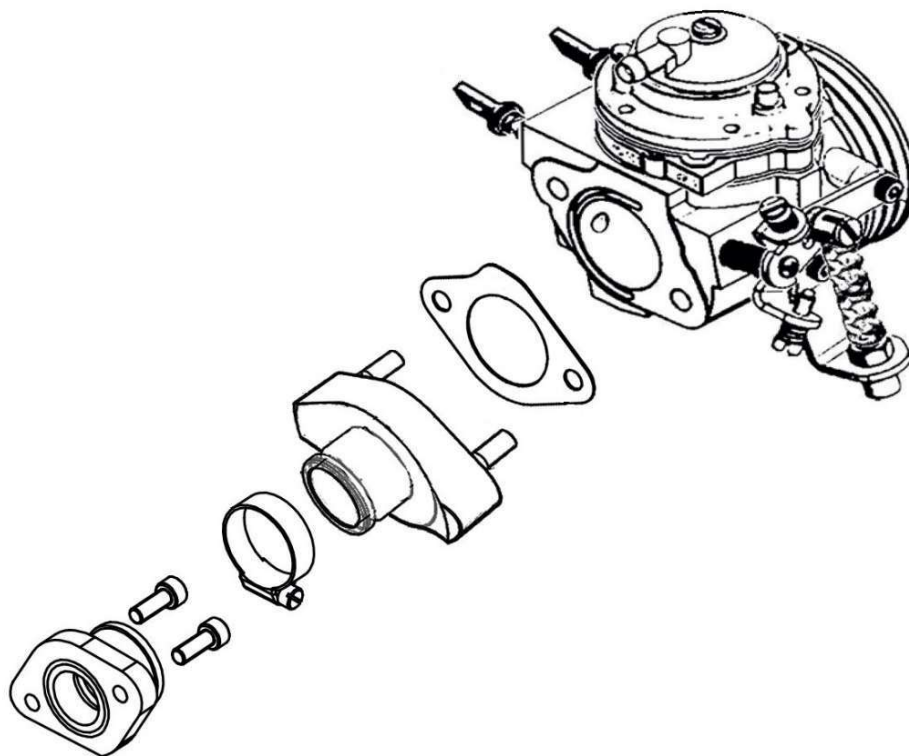
ATTENTION

ALL THE ENGINE PARTS MUST BE ORIGINAL BY VORTEX ROK.

Neither engines nor accessories can be modified. By this we mean any shape, content or function changes which may differ from what originally produced (manufactured and assembled). Furthermore this includes any addition and /or removal of material.
All dimensions in the technical drawings are in mm.

MINI / MICRO ROK 2025

PHOTO OF THE ASSEMBLY OF THE INTAKE GROUP



ATTENTION

ALL THE ENGINE PARTS MUST BE ORIGINAL BY VORTEX ROK.

Neither engines nor accessories can be modified. By this we mean any shape, content or function changes which may differ from what originally produced (manufactured and assembled). Furthermore this includes any addition and /or removal of material.
All dimensions in the technical drawings are in mm.

