

## IDENTIFICATION SHEET

This Identification Sheet reproduces descriptions, illustrations and dimensions of the VLR ROK.



### ATTENTION

**ALL THE ENGINE PARTS MUST BE ORIGINAL BY VORTEX ROK.**

Neither engines nor accessories can be modified. By this we mean any shape, content or function changes which may differ from what originally produced (manufactured and assembled). Furthermore this includes any addition and /or removal of material.  
All dimensions in the technical drawings are in mm.



## VLR / VLR-JUNIOR ROK 2025

TECHNICAL INFORMATION AND CHARACTERISTICS	
ORIGINAL BORE	42,20 mm +/-0,2mm
MAX ALLOWED BORE	48,53 mm
STROKE	54mm +/- 0,2 mm
ORIGINAL DISPLACEMENT	100 cc
CONROD C-TO-C DISTANCE	102mm +/- 0,2 mm
WEIGHT OF CONROD	127g +/- 2g
SPROCKET	Z10-Z11-Z12

CYLINDER DEVELOPMENT AND DISTRIBUTION	
EXHAUST PORT	169° MAX
BOOSTER	167° MAX
MAIN TRANSFER	123,5° ± 2°
SECONDARY TRANSFER	132° MAX

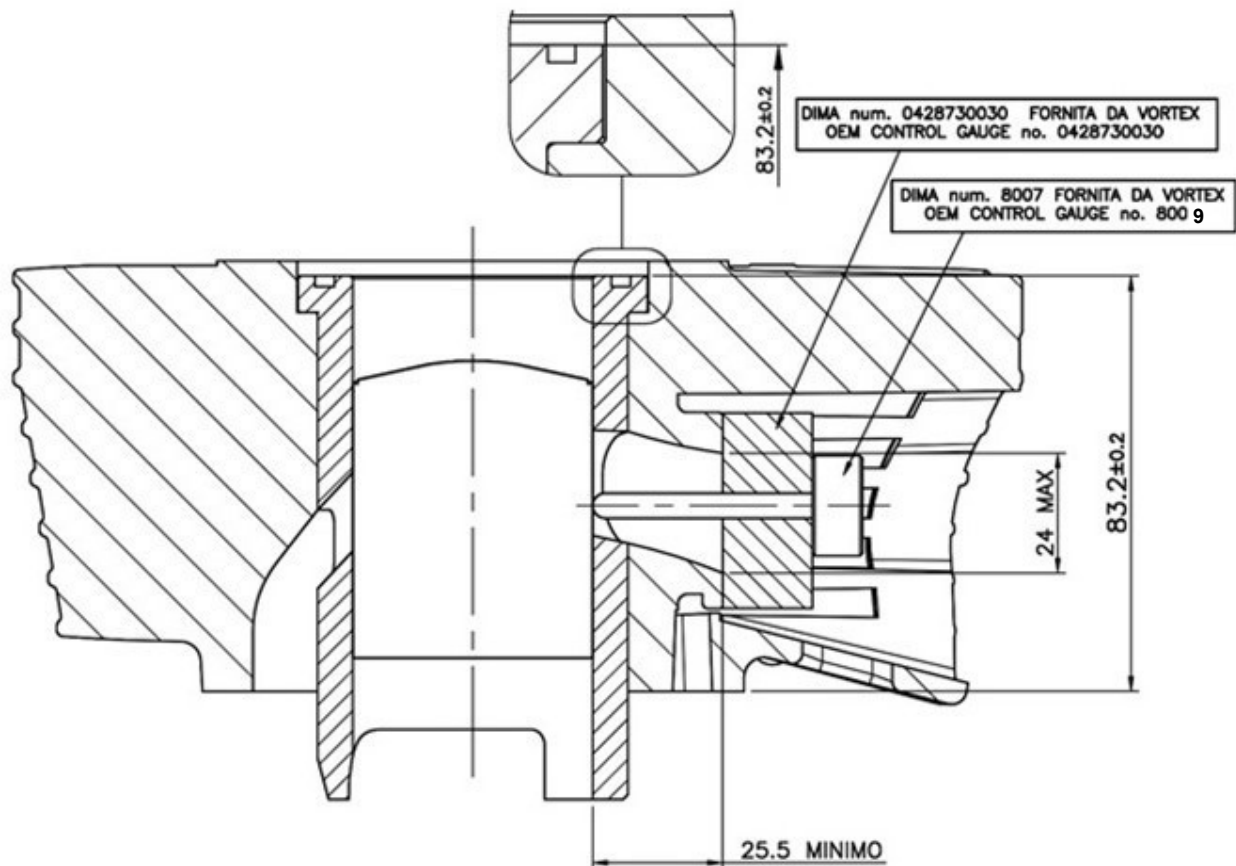
Check of the distribution as described in the **ROK CUP USA 2025 Technical Regulation.**

Measurement must be made with engine head mantled (studs tightening torque: 1.8 kgm).

<b>ATTENTION</b>	<p><b><u>ALL THE ENGINE PARTS MUST BE ORIGINAL BY VORTEX ROK.</u></b> Neither engines nor accessories can be modified. By this we mean any shape, content or function changes which may differ from what originally produced (manufactured and assembled). Furthermore this includes any addition and /or removal of material. All dimensions in the technical drawings are in mm.</p>
------------------	--

## CYLINDER SECTION

### MINIMUM DISTANCE OF THE EXHAUST MANIFOLD PLAN FROM THE CYLINDER AXLE



### ATTENTION

#### **ALL THE ENGINE PARTS MUST BE ORIGINAL BY VORTEX ROK.**

Neither engines nor accessories can be modified. By this we mean any shape, content or function changes which may differ from what originally produced (manufactured and assembled). Furthermore this includes any addition and /or removal of material.  
All dimensions in the technical drawings are in mm.

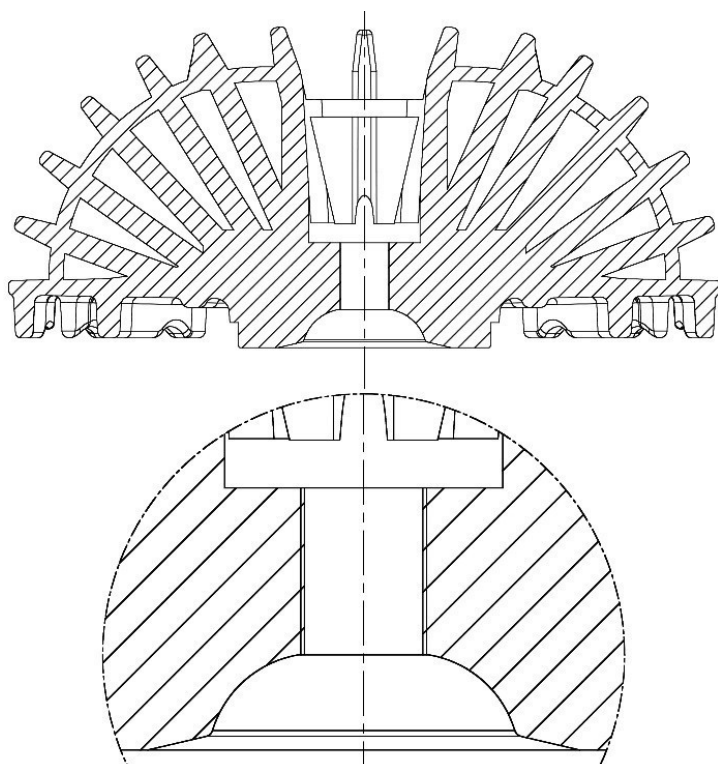
## DRAWING OF CYLINDERHEAD AND COMBUSTION CHAMBER

VOLUME OF COMBUSTION CHAMBER

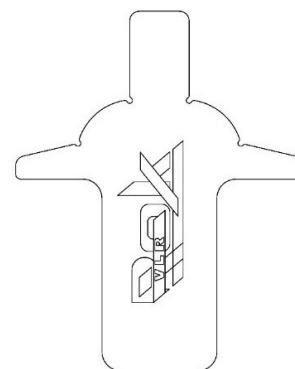
8,60 cc MIN. With FIA INSERT

Volume of combustion chamber, as described in the **ROK CUP USA Technical Regulation 2025**.

**SQUISH THICKNESS : 1mm MIN**



VORTEX TEMPLATE FOR  
COMBUSTION CHAMBER  
PROFILE CONTROL

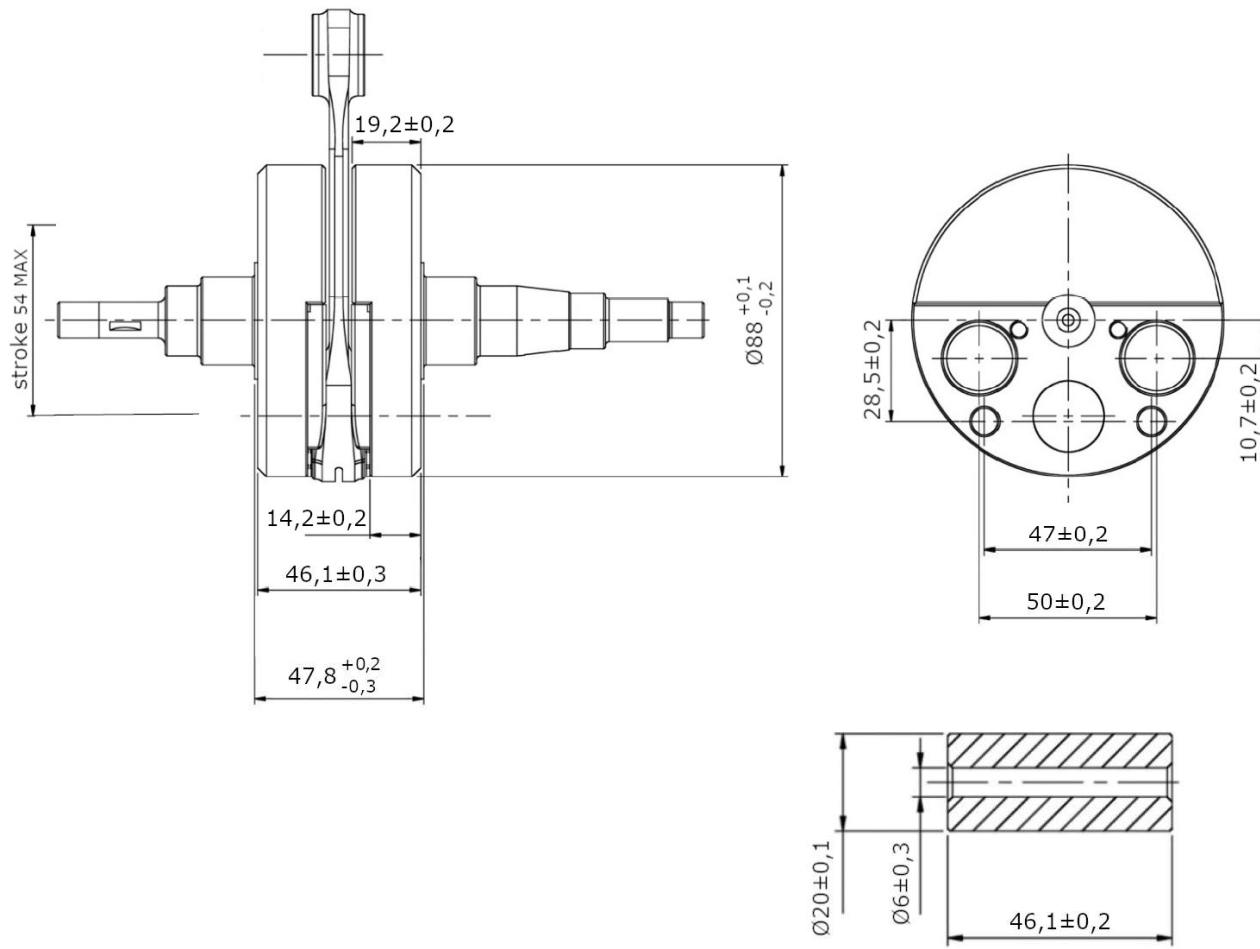


**ATTENTION**

**ALL THE ENGINE PARTS MUST BE ORIGINAL BY VORTEX ROK.**

Neither engines nor accessories can be modified. By this we mean any shape, content or function changes which may differ from what originally produced (manufactured and assembled). Furthermore this includes any addition and /or removal of material.  
All dimensions in the technical drawings are in mm.

## CRANKSHAFT AND CRANKPIN

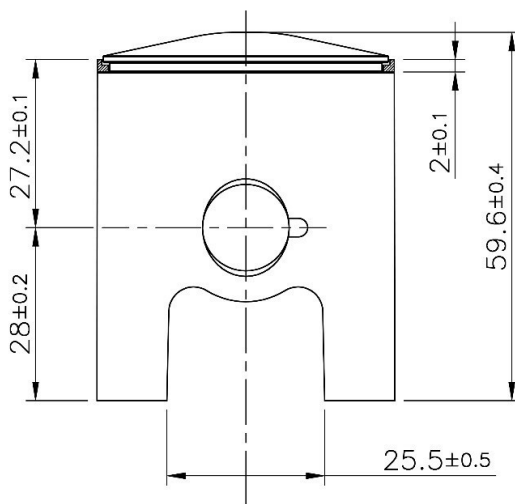


Peso – Weight – Poid  
**1.870g +/- 10g**

Peso – Weight – Poid  
**102g +/- 2g**

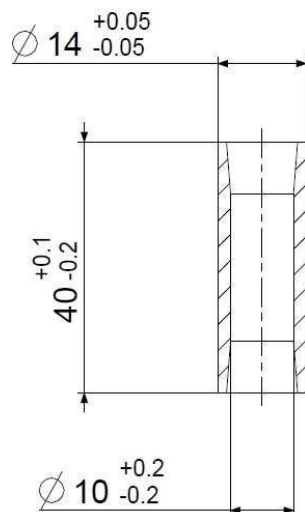
**ATTENTION** **ALL THE ENGINE PARTS MUST BE ORIGINAL BY VORTEX ROK.**  
 Neither engines nor accessories can be modified. By this we mean any shape, content or function changes which may differ from what originally produced (manufactured and assembled). Furthermore this includes any addition and /or removal of material.  
 All dimensions in the technical drawings are in mm.

## PISTON



**WEIGHT**  
97gr +/- 5 gr

## PISTON PIN



**WEIGHT**  
21gr Min.

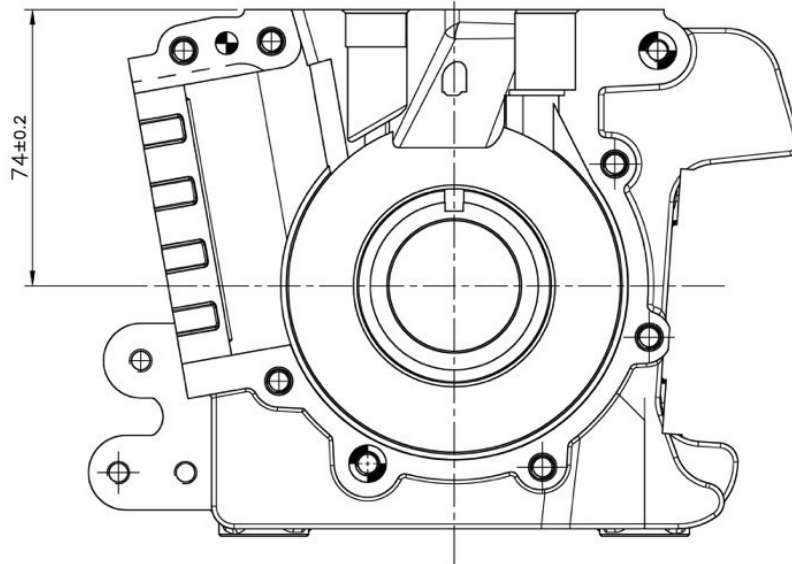
### ATTENTION

**ALL THE ENGINE PARTS MUST BE ORIGINAL BY VORTEX ROK.**

Neither engines nor accessories can be modified. By this we mean any shape, content or function changes which may differ from what originally produced (manufactured and assembled). Furthermore this includes any addition and /or removal of material.  
All dimensions in the technical drawings are in mm.

# VLR / VLR-JUNIOR ROK 2025

## INTERIOR VIEW OF THE CRANKCASE AND ASEMBLY WIEV



## CRANKSHAFT BEARINGS

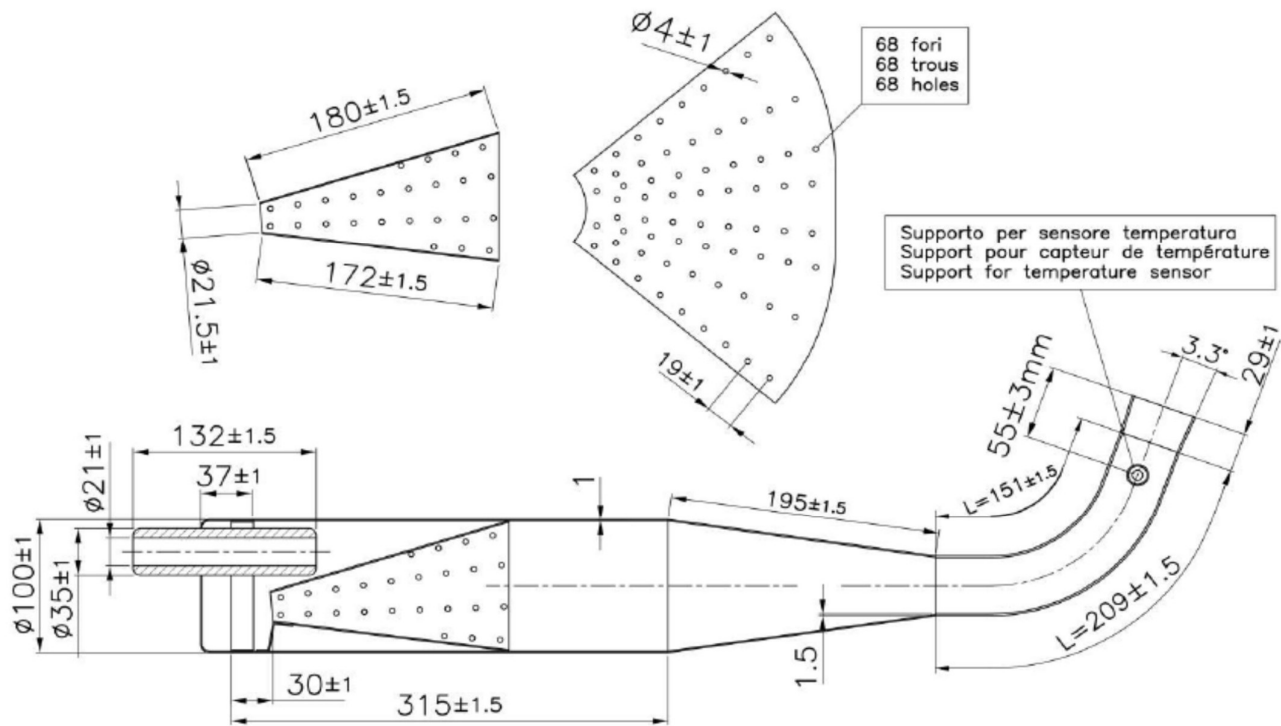
TYPE	DIMENSION	CHARACTERISTICS
Free brand 6205.C4	25x52x15mm	Steel Balls 9

### ATTENTION

**ALL THE ENGINE PARTS MUST BE ORIGINAL BY VORTEX ROK.**

Neither engines nor accessories can be modified. By this we mean any shape, content or function changes which may differ from what originally produced (manufactured and assembled). Furthermore this includes any addition and /or removal of material.  
All dimensions in the technical drawings are in mm.

## EXHAUST MUFFLER



**EHAUST WEIGHT**  
1990 gr +/- 5%

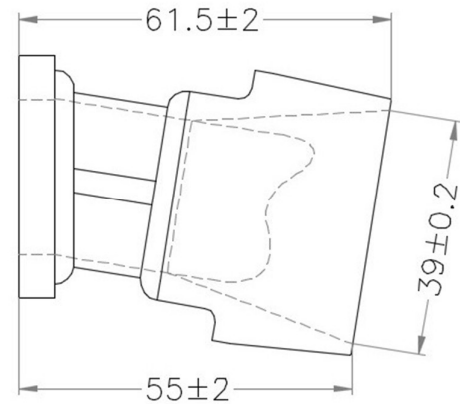
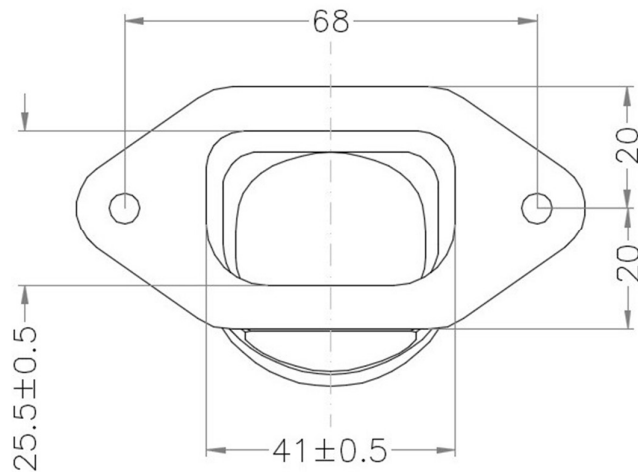
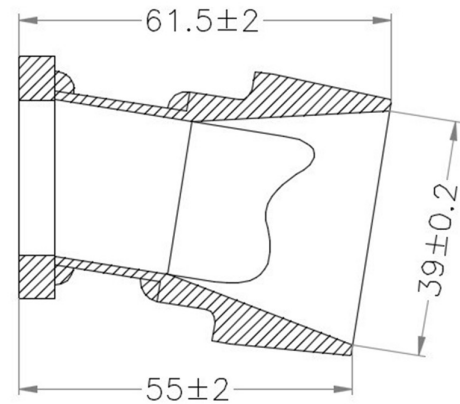
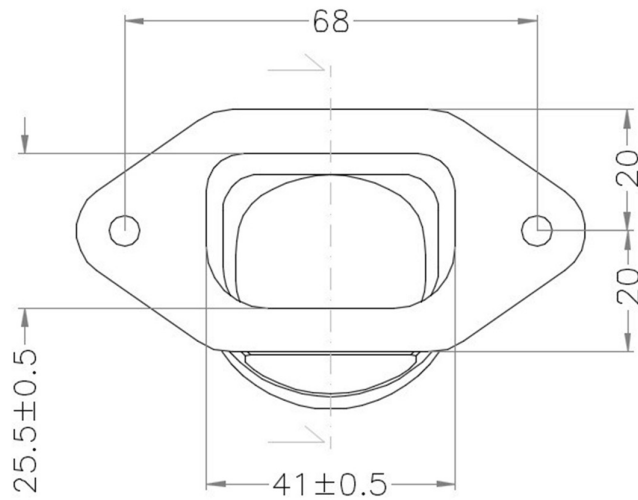
The end parts of the silencer must have two soldered pairs of lugs (one pair at the top and one pair at the bottom) to allow for fixing of seals by the Organizer so that the silencer may be opening during the competition.

**ATTENTION**

**ALL THE ENGINE PARTS MUST BE ORIGINAL BY VORTEX ROK.**

Neither engines nor accessories can be modified. By this we mean any shape, content or function changes which may differ from what originally produced (manufactured and assembled). Furthermore this includes any addition and /or removal of material. All dimensions in the technical drawings are in mm.

## EXHAUST MANIFOLD

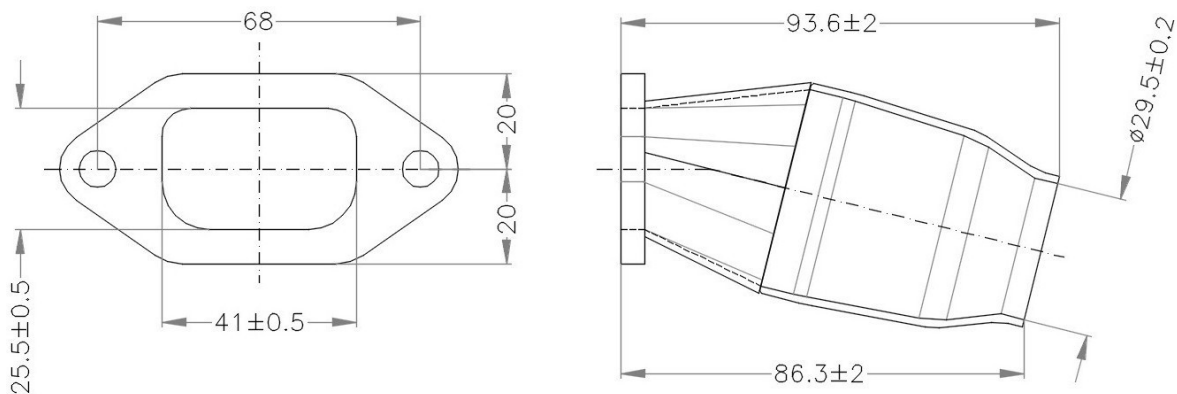


### ATTENTION

**ALL THE ENGINE PARTS MUST BE ORIGINAL BY VORTEX ROK.**

Neither engines nor accessories can be modified. By this we mean any shape, content or function changes which may differ from what originally produced (manufactured and assembled). Furthermore this includes any addition and /or removal of material.  
All dimensions in the technical drawings are in mm.

## EXHAUST MANIFOLD VLR JUNIOR



## PICTURES AND MARKING OF MANIFOLD

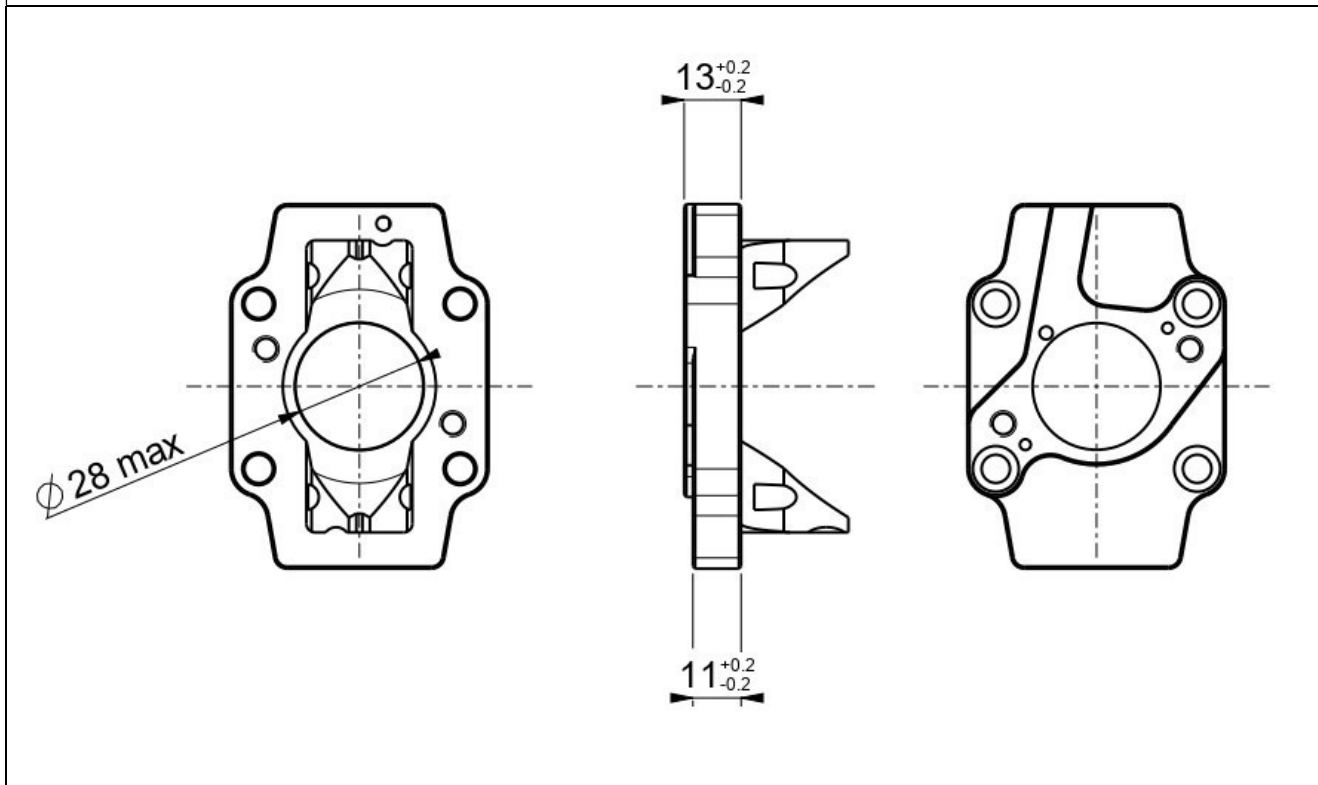


### ATTENTION

**ALL THE ENGINE PARTS MUST BE ORIGINAL BY VORTEX ROK.**

Neither engines nor accessories can be modified. By this we mean any shape, content or function changes which may differ from what originally produced (manufactured and assembled). Furthermore this includes any addition and /or removal of material.  
All dimensions in the technical drawings are in mm.

## DRAWING OF REED VALVE COVER

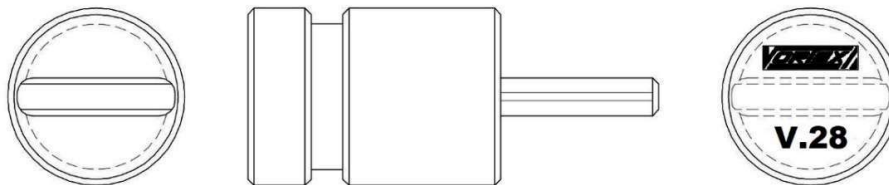


### ATTENTION

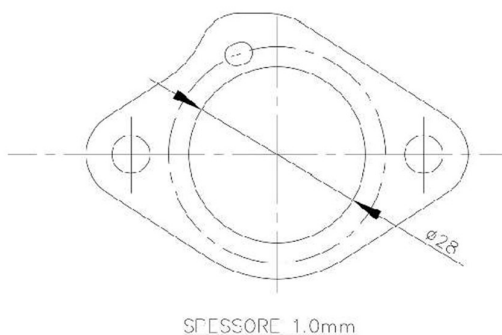
**ALL THE ENGINE PARTS MUST BE ORIGINAL BY VORTEX ROK.**

Neither engines nor accessories can be modified. By this we mean any shape, content or function changes which may differ from what originally produced (manufactured and assembled). Furthermore this includes any addition and /or removal of material.  
All dimensions in the technical drawings are in mm.

**DISEGNO DIMA DI CONTROLLO DEL CONVOGLIATORE  
DRAWING OF THE CONTROL GEUGE OF THE REED VALVE COVER  
DESSIN DU GABARIT POUR LA VERIFICATION DU COUVERCLE DE LA BOÎTE À CLAPETS**



**DISEGNO TECNICO GUARNIZIONE TRA CRBURATORE E MOTORE  
TECHNICAL DRAWING GASKET BETWEEN CARBURETTOR AND ENGINE  
DESSIN TECHNIQUE JOINT ENTRE CARBURATEUR ET MOTEUR**

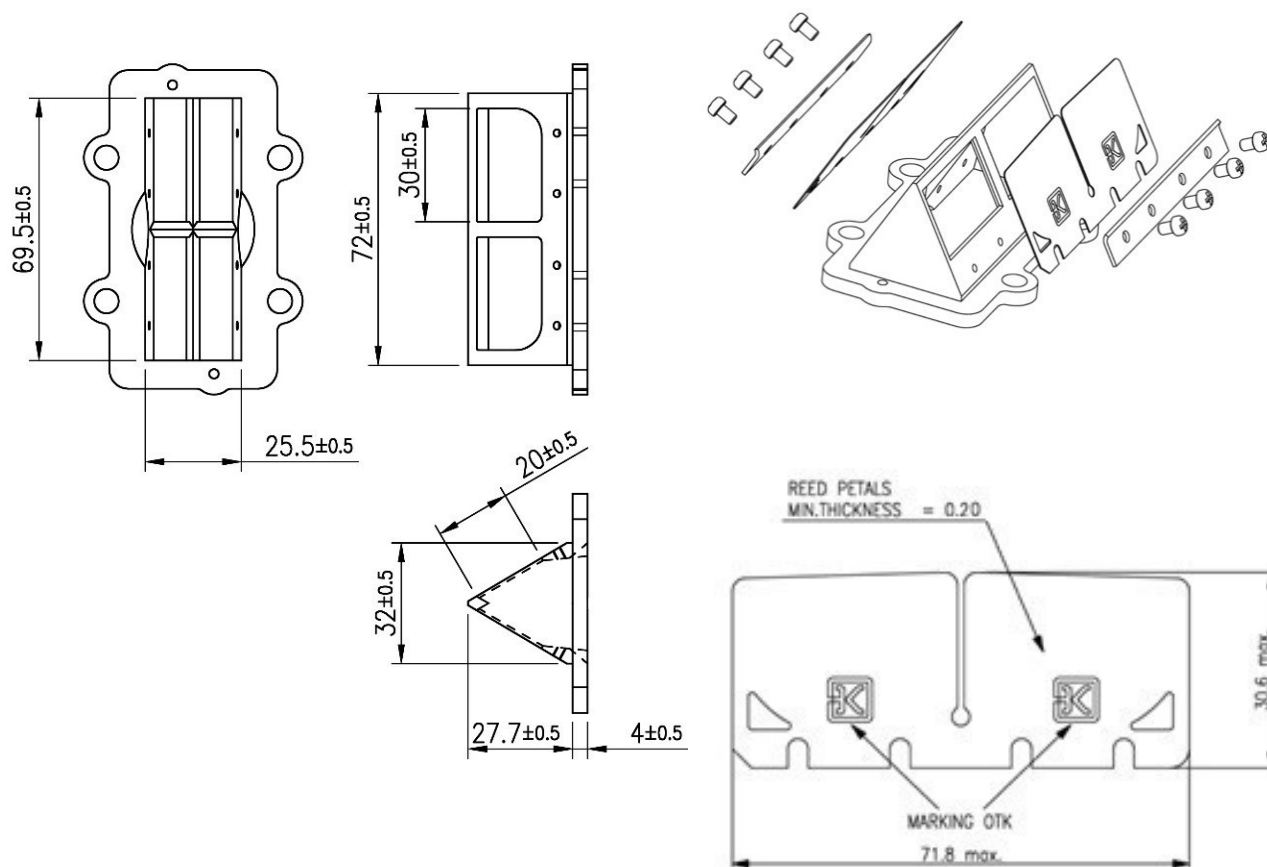


**ATTENTION**

**ALL THE ENGINE PARTS MUST BE ORIGINAL BY VORTEX ROK.**

Neither engines nor accessories can be modified. By this we mean any shape, content or function changes which may differ from what originally produced (manufactured and assembled). Furthermore this includes any addition and /or removal of material.  
All dimensions in the technical drawings are in mm.

## DRAWING OF REED BLOCK AND REED VALVE

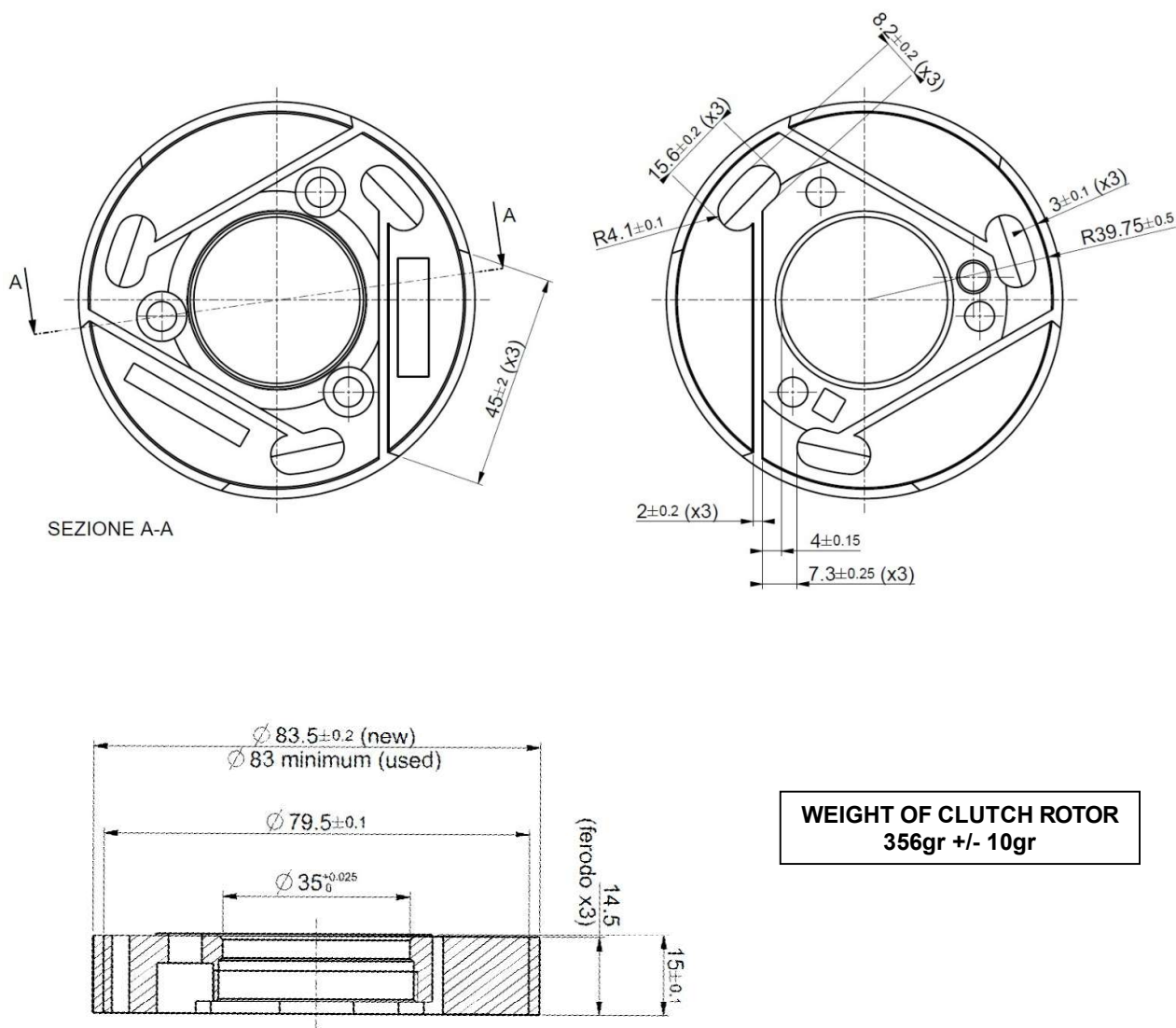


### ATTENTION

#### **ALL THE ENGINE PARTS MUST BE ORIGINAL BY VORTEX ROK.**

Neither engines nor accessories can be modified. By this we mean any shape, content or function changes which may differ from what originally produced (manufactured and assembled). Furthermore this includes any addition and /or removal of material.  
All dimensions in the technical drawings are in mm.

## CLUTCH ROTOR

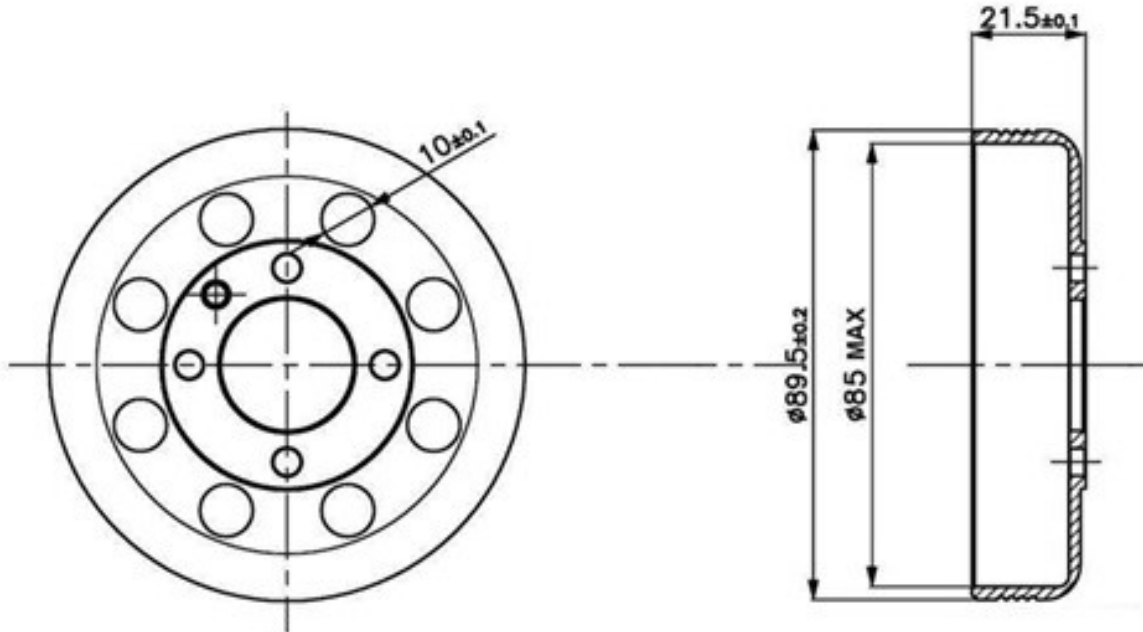


**ATTENTION**

**ALL THE ENGINE PARTS MUST BE ORIGINAL BY VORTEX ROK.**

Neither engines nor accessories can be modified. By this we mean any shape, content or function changes which may differ from what originally produced (manufactured and assembled). Furthermore this includes any addition and /or removal of material.  
All dimensions in the technical drawings are in mm.

## CLUTCH HOUSING



**WEIGHT OF CLUTCH HOUSING**  
177gr +/- 5gr

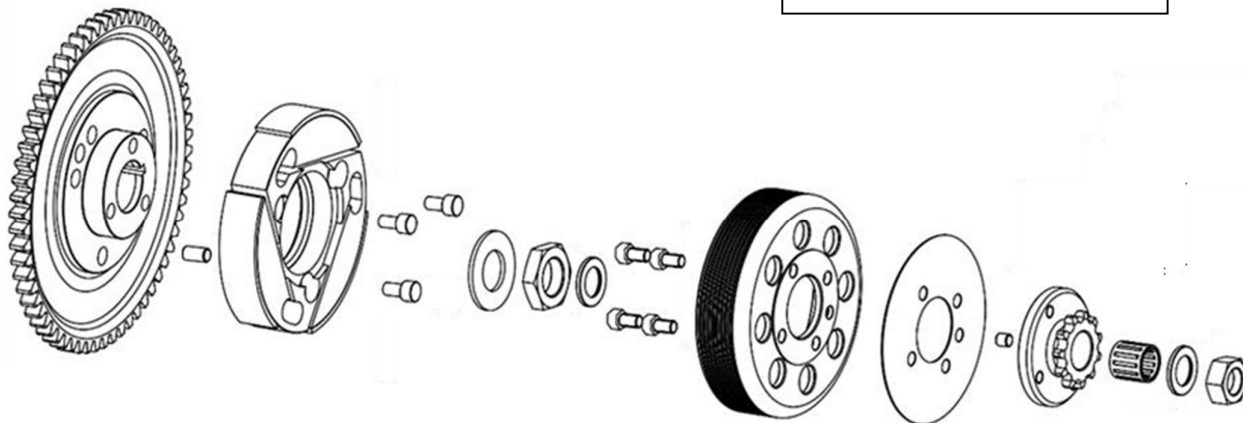
**ATTENTION**

**ALL THE ENGINE PARTS MUST BE ORIGINAL BY VORTEX ROK.**

Neither engines nor accessories can be modified. By this we mean any shape, content or function changes which may differ from what originally produced (manufactured and assembled). Furthermore this includes any addition and /or removal of material.  
All dimensions in the technical drawings are in mm.

## COMPL. CLUTCH ROTOR WITH STARTING GEAR

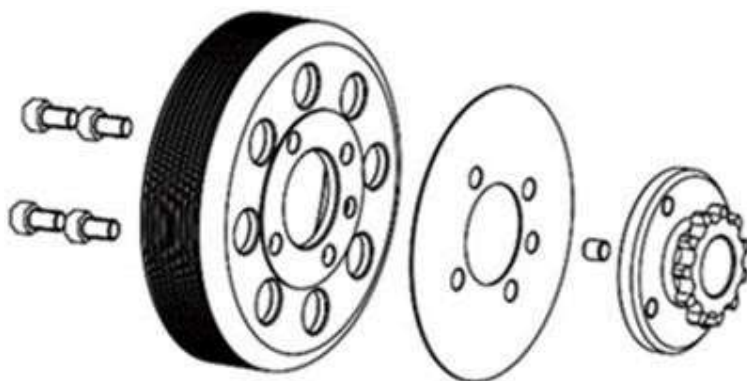
Z10-Z11-Z12 – CHAIN TYPE 219



**PARTS QUANTITY: 20**

**WEIGHT OF THE COMPLETE CLUTCH WITH STARTING GEAR AND PROTECTION: 830g MIN.**

**ENGAGEMENT SPEED (MAXIMUM) CAN BE VERIFIED IN EVERY MOMENT OF THE EVENT: 4000 RPM**



**PARTS QUANTITY: 8**

**WEIGHT OF THE CLUTCH HOUSING WITH SPROCKET: 264g MIN.**

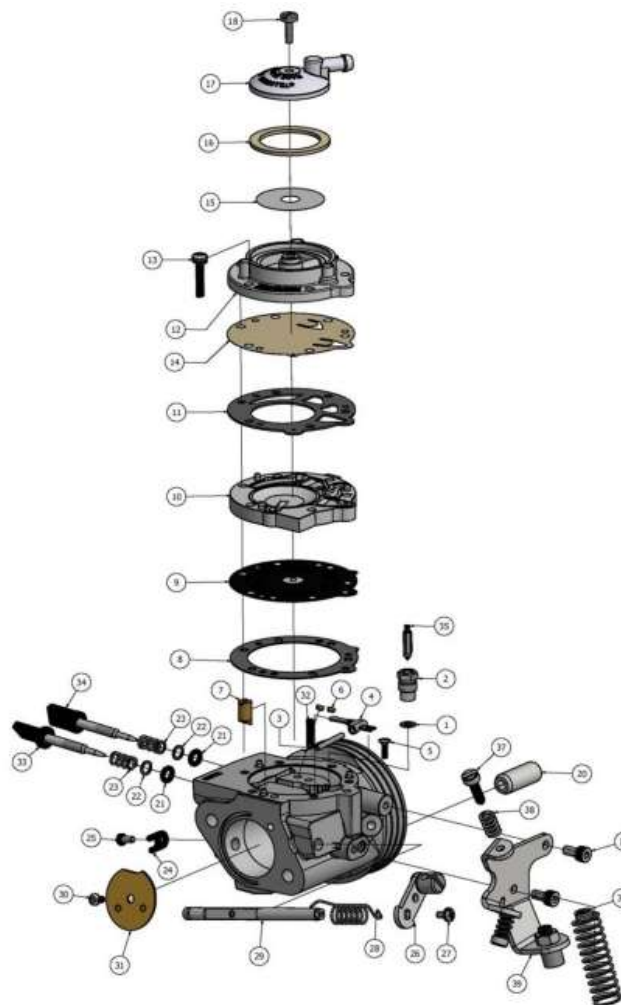
**ATTENTION**

**ALL THE ENGINE PARTS MUST BE ORIGINAL BY VORTEX ROK.**

Neither engines nor accessories can be modified. By this we mean any shape, content or function changes which may differ from what originally produced (manufactured and assembled). Furthermore this includes any addition and /or removal of material.  
All dimensions in the technical drawings are in mm.

## CARBURETTOR AND COMPONENTS

### TILLOTSON CARBURATOR HW 38A



ITEM	QTY	DESCRIPTION	ITEM	QTY	DESCRIPTION	ITEM	QTY	DESCRIPTION
1	1	* INLET SEAT GASKET	17	1	FUEL STRAINER COVER	33	1	8-32 UNC ADJUSTMNET SCREW ASSEMBLY
2	1	* INLET SEAT	18	1	5-40 UNC SCREW	34	1	8-32 UNC ADJUSTMNET SCREW ASSEMBLY
3	1	FULCRUM LEVER PIN	19	2	M4 X 0,7 SOCKET CAP SCREW	35	1	+ INLET NEEDLE
4	1	+ INLET CONTRO LEVER	20	2	CARBURETTOR MOUNTING NUT	36	1	CABLE RETURN SPRING
5	1	FULCRUM PIN SCREW	21	2	ADJUSTMENT SCREW O-RING	37	2	LIMITER SCREW
6	2	BRASS PLUG	22	2	ADJUSTMENT SCREW WASHER	38	2	SPEED CREW SPRING
7	1	IDLE NOZZLE	23	2	ADJUSTMENT SCREW SPRING	39	1	CABLE BRACKET
8	1	* DIAPHRAGM GASKET	24	1	THROTTLE SHAFT CLIP			
9	1	* DIAPHRAGM ASSEMBLY	25	1	4-40 UNC SCREW		*	REPAIR KIT CONTENTS
10	1	FUEL PUMP BODY	26	1	THROTTLE LEVER ASSEMBLY		+	DIAPHRAGM & GASKET KIT CONTENTS
11	1	* FUEL PUMP GASKET	27	1	4-40 UNC SCREW			
12	1	FUEL PUMP BODY	28	1	THROTTLE RETUR SPRING			
13	6	6 - 32 UNC SCREW WITH LOCK WASHER	29	1	THROTTLE SHAFT			
14	1	* FUEL PUMP DIAPHRAGM	30	1	4-40 UNC SCREW			
15	1	FUEL STRAINER SCREEN	31	1	THROTTLE SHUTTER			
16	1	* FUEL STRAINER COVER GASKET	32	1	INLET TENSION SPRING 37g			

### ATTENTION

#### **ALL THE ENGINE PARTS MUST BE ORIGINAL BY VORTEX ROK.**

Neither engines nor accessories can be modified. By this we mean any shape, content or function changes which may differ from what originally produced (manufactured and assembled). Furthermore this includes any addition and /or removal of material.  
All dimensions in the technical drawings are in mm.

INLET SILENCER	
MODEL TYPE	ARROW FOR VLR

<b>ATTENTION</b>	<p><b><u>ALL THE ENGINE PARTS MUST BE ORIGINAL BY VORTEX ROK.</u></b></p> <p>Neither engines nor accessories can be modified. By this we mean any shape, content or function changes which may differ from what originally produced (manufactured and assembled). Furthermore this includes any addition and /or removal of material.</p> <p>All dimensions in the technical drawings are in mm.</p>
------------------	--

## AIR FILTER RUBBER SLEEVE

OPTION 1



OPTION 2



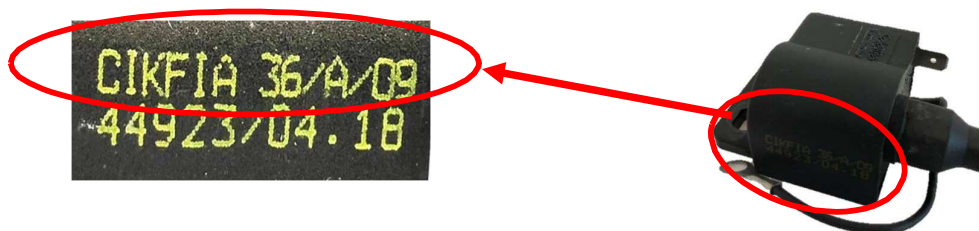
RUBBER BUSH CAN BE CUT ON ONE SIDE. AIR FILTER BRAND/SIZE IS OPEN.

**ATTENTION**

**ALL THE ENGINE PARTS MUST BE ORIGINAL BY VORTEX ROK.**

Neither engines nor accessories can be modified. By this we mean any shape, content or function changes which may differ from what originally produced (manufactured and assembled). Furthermore this includes any addition and /or removal of material.  
All dimensions in the technical drawings are in mm.

## PICTURES OF SELETTRA IGNITION



Engines shall be mandatory switched on and off by means of onboard starting system. Technical steward members shall check the on-off onboard system anytime.

**ATTENTION**

**ALL THE ENGINE PARTS MUST BE ORIGINAL BY VORTEX ROK.**

Neither engines nor accessories can be modified. By this we mean any shape, content or function changes which may differ from what originally produced (manufactured and assembled). Furthermore this includes any addition and /or removal of material. All dimensions in the technical drawings are in mm.

## STARTER WIRING

### OPTION 1



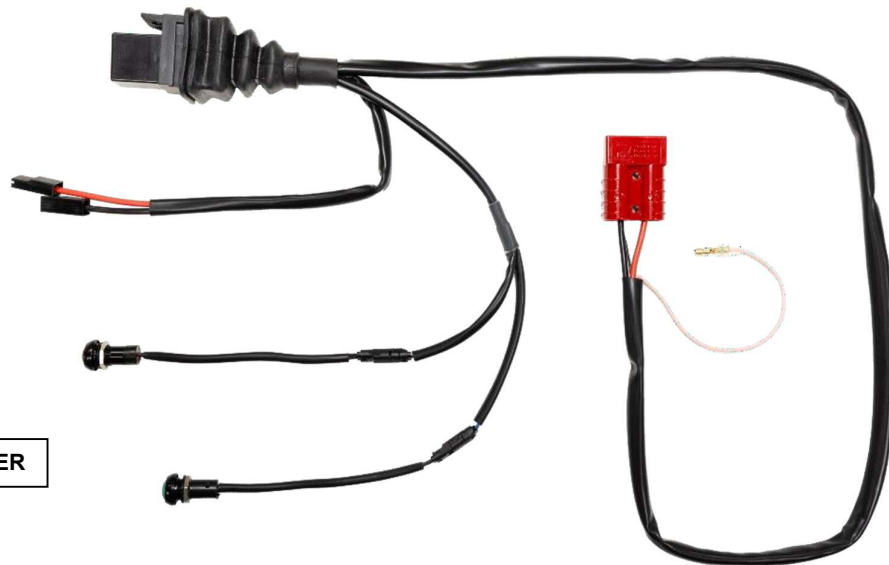
OPTIONAL BUTTON COVER



### OPTION 2



OPTIONAL BUTTON COVER



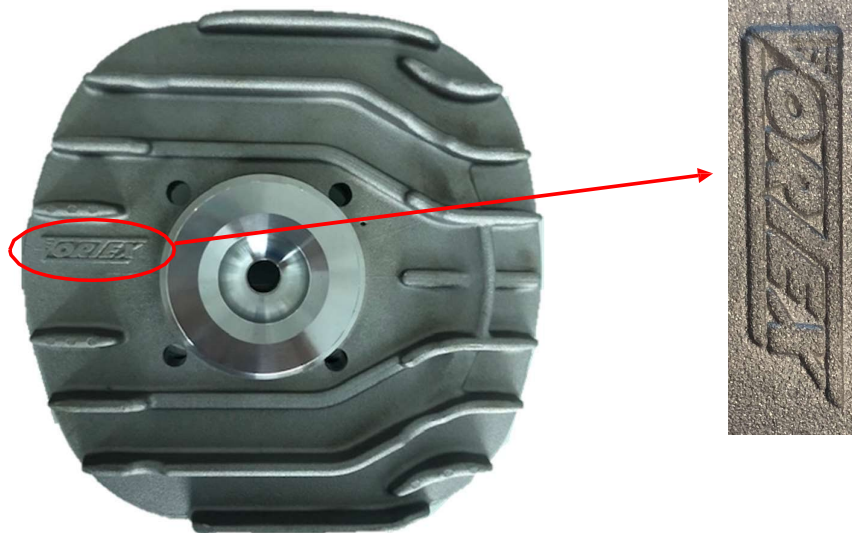
Engines shall be mandatory switched on and off by means of onboard starting system.  
 Technical steward members shall check the on-off onboard system anytime.

**ATTENTION**

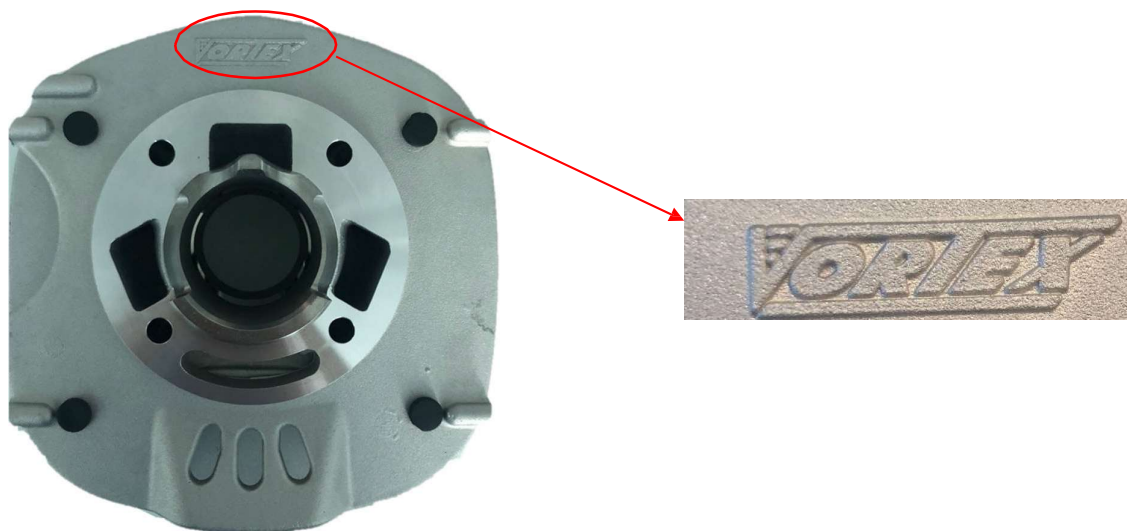
**ALL THE ENGINE PARTS MUST BE ORIGINAL BY VORTEX ROK.**

Neither engines nor accessories can be modified. By this we mean any shape, content or function changes which may differ from what originally produced (manufactured and assembled). Furthermore this includes any addition and /or removal of material.  
 All dimensions in the technical drawings are in mm.

## MARKING OF THE CYLINDERHEAD AND COMBUSTION CHAMBER



## MARKING OF CYLINDER BASE

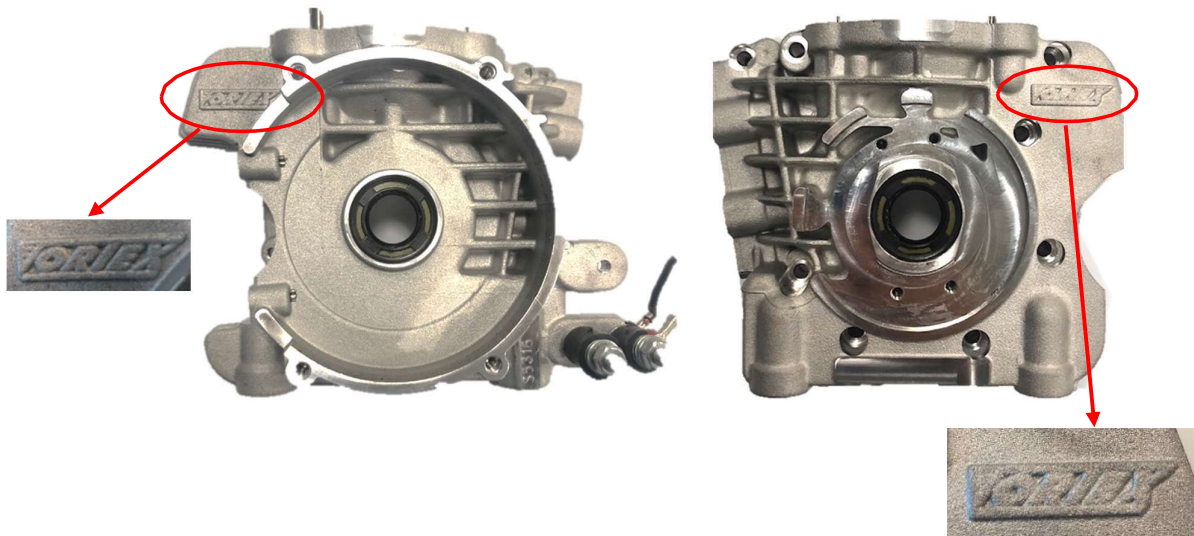


### ATTENTION

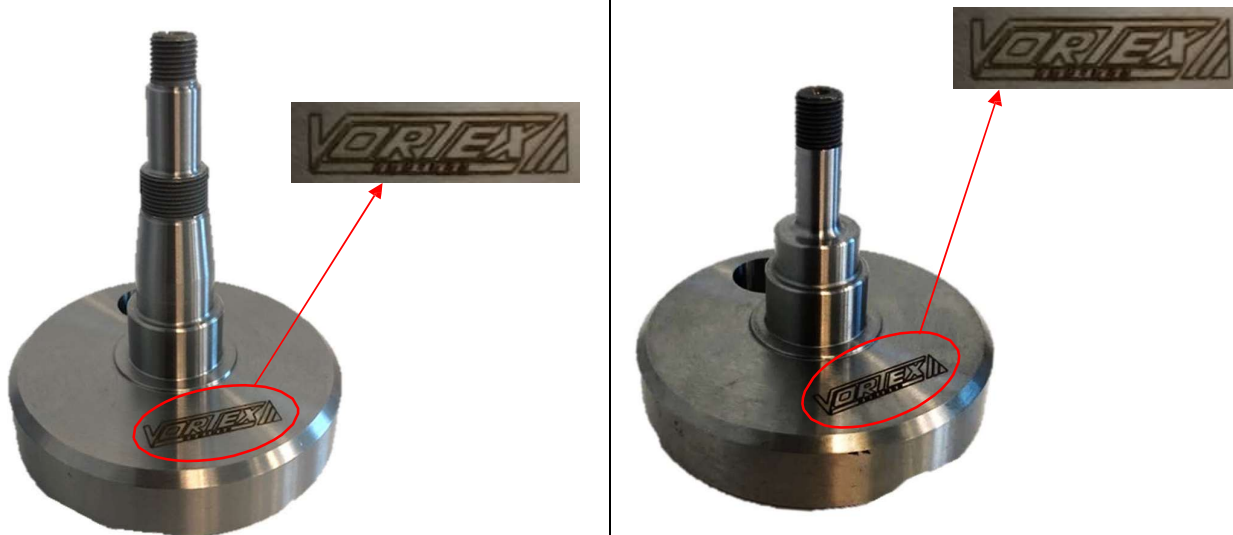
#### **ALL THE ENGINE PARTS MUST BE ORIGINAL BY VORTEX ROK.**

Neither engines nor accessories can be modified. By this we mean any shape, content or function changes which may differ from what originally produced (manufactured and assembled). Furthermore this includes any addition and /or removal of material.  
All dimensions in the technical drawings are in mm.

## MARKING OF THE CRANKCASE



## MARKING OF CRANKSHAFT



**ATTENTION**

**ALL THE ENGINE PARTS MUST BE ORIGINAL BY VORTEX ROK.**

Neither engines nor accessories can be modified. By this we mean any shape, content or function changes which may differ from what originally produced (manufactured and assembled). Furthermore this includes any addition and /or removal of material.  
All dimensions in the technical drawings are in mm.

PICTURE OF THE PISTON	MARKING OF THE CONROD
	

**MARKING OF THE PISTON**

**Mandatory to have the brand VORTEX cast piston as shown in the picture.**

	
---	--

<b>ATTENTION</b>	<p><b><u>ALL THE ENGINE PARTS MUST BE ORIGINAL BY VORTEX ROK.</u></b></p> <p>Neither engines nor accessories can be modified. By this we mean any shape, content or function changes which may differ from what originally produced (manufactured and assembled). Furthermore this includes any addition and /or removal of material. All dimensions in the technical drawings are in mm.</p>
------------------	---

## PHOTO AND MARKING OF THE EXHAUST



### ATTENTION

**ALL THE ENGINE PARTS MUST BE ORIGINAL BY VORTEX ROK.**

Neither engines nor accessories can be modified. By this we mean any shape, content or function changes which may differ from what originally produced (manufactured and assembled). Furthermore this includes any addition and /or removal of material.  
All dimensions in the technical drawings are in mm.

## PICTURES AND MARKING OF REED VALVE COVER



## PICTURES AND MARKING OF PIGNION AND CLUTCH DRUM

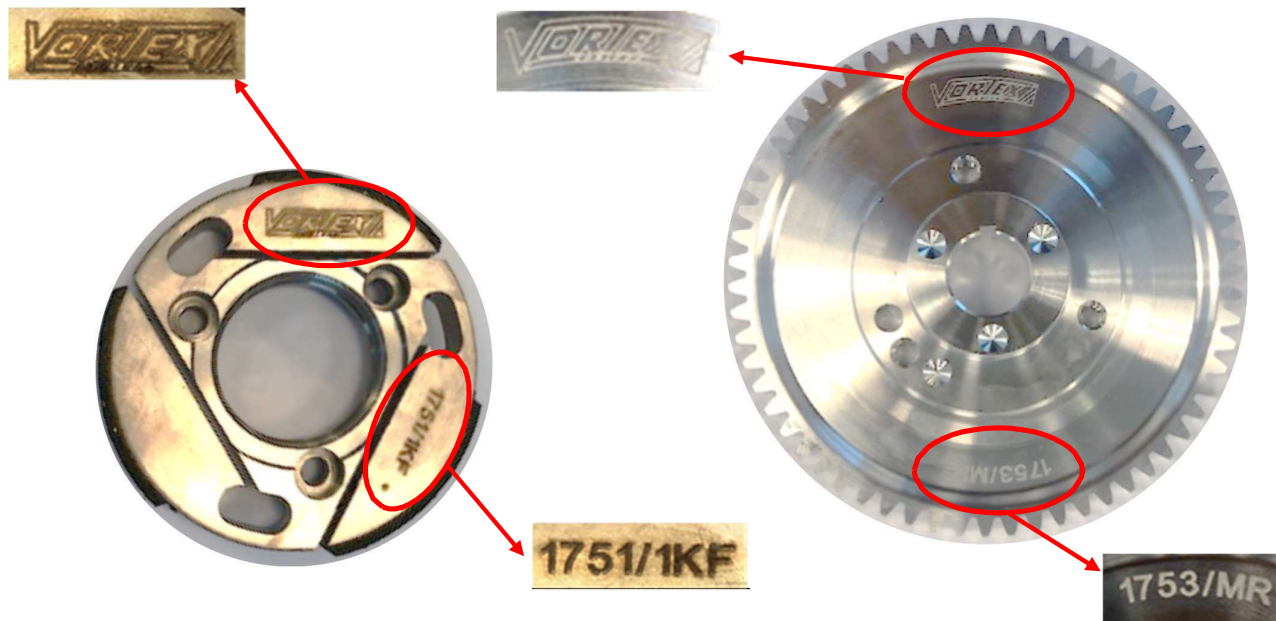


**ATTENTION**

**ALL THE ENGINE PARTS MUST BE ORIGINAL BY VORTEX ROK.**

Neither engines nor accessories can be modified. By this we mean any shape, content or function changes which may differ from what originally produced (manufactured and assembled). Furthermore this includes any addition and /or removal of material.  
All dimensions in the technical drawings are in mm.

## PICTURES AND MARKING OF CLUTCH BODY AND STARTER WHEELS



## REED PETALS



**CARBON FIBER REED PETALS MUST BE BOTH, MANDATORY, ORIGINAL AND BRANDED OTK AS SHOWN IN THE PICTURE, MINIMUM THICKNESS 0,20mm.**

**ATTENTION**

**ALL THE ENGINE PARTS MUST BE ORIGINAL BY VORTEX ROK.**

Neither engines nor accessories can be modified. By this we mean any shape, content or function changes which may differ from what originally produced (manufactured and assembled). Furthermore this includes any addition and /or removal of material. All dimensions in the technical drawings are in mm.